

Product datasheet for **TA358538**

CD153 (TNFSF8) Rabbit Polyclonal Antibody

Product data:

Product Type:	Primary Antibodies
Applications:	WB
Reactivity:	Human
Host:	Rabbit
Clonality:	Polyclonal
Specificity:	Expected reactivity: Cow, Dog, Guinea Pig, Horse, Human, Mouse, Rabbit, Rat Homology: Cow: 100%; Dog: 100%; Guinea Pig: 79%; Horse: 100%; Human: 100%; Mouse: 100%; Rabbit: 93%; Rat: 86%
Formulation:	Liquid. Purified antibody supplied in 1x PBS buffer with 0.09% (w/v) sodium azide and 2% sucrose. <i>Note that this product is shipped as lyophilized powder to China customers.</i>
Concentration:	lot specific
Purification:	Affinity Purified
Conjugation:	Unconjugated
Storage:	For short term use, store at 2-8°C up to 1 week. For long term storage, store at -20°C in small aliquots to prevent freeze-thaw cycles.
Stability:	Shelf life: one year from despatch.
Predicted Protein Size:	26kDa
Gene Name:	tumor necrosis factor superfamily member 8
Database Link:	NP_001235 Entrez Gene 944 Human P32971



[View online »](#)

Background:

The protein encoded by this gene is a cytokine that belongs to the tumor necrosis factor (TNF) ligand family. This cytokine is a ligand for TNFRSF8/CD30, which is a cell surface antigen and a marker for Hodgkin lymphoma and related hematologic malignancies. The engagement of this cytokine expressed on B cell surface plays an inhibitory role in modulating Ig class switch. This cytokine was shown to enhance cell proliferation of some lymphoma cell lines, while to induce cell death and reduce cell proliferation of other lymphoma cell lines. The pleiotropic biologic activities of this cytokine on different CD30+ lymphoma cell lines may play a pathophysiologic role in Hodgkin's and some non-Hodgkin's lymphomas. Two transcript variants encoding different isoforms have been found for this gene.

Synonyms:

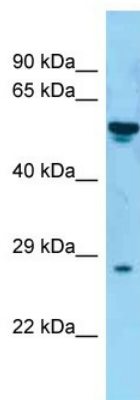
CD30-L; CD30L; CD30LG; CD153; MGC138144

Protein Families:

Druggable Genome, Transmembrane

Protein Pathways:

Cytokine-cytokine receptor interaction

Product images:


WB Suggested Anti-TNFSF8 Antibody
Titration: 1.0 ug/ml
Positive Control: Fetal kidney



A B

Anti-TNFSF8 Western Blot & Peptide Block Validation

Lot Number: QC34439

Sample Type: Human Daudi

Lane A: Primary Antibody

Lane B: Primary Antibody + Blocking Peptide

Primary Antibody Concentration: 1.0ug/ml

Peptide Concentration: 2.0ug/ml

Lysate Quantity: 25ug/lane

Host: Rabbit

Target Name: TNFSF8

Sample Type: Human Daudi

Lane A: Primary Antibody

Lane B: Primary Antibody + Blocking Peptide

Primary Antibody Concentration: 1.0 ug/ml

Peptide Concentration: 2.0 ug/ml

Lysate Quantity: 25 ug/lane