

## Product datasheet for **TA358534**

### **RASGRP1 Rabbit Polyclonal Antibody**

#### **Product data:**

|                         |  |
|-------------------------|--|
| Product Type:           | Primary Antibodies   |
| Applications:           | WB   |
| Reactivity:             | Human  |
| Host:                   | Rabbit   |
| Clonality:              | Polyclonal   |
| Specificity:            | <b>Expected reactivity:</b> Cow, Dog, Guinea Pig, Horse, Human, Mouse, Rabbit, Rat<br><b>Homology:</b> Cow: 86%; Dog: 93%; Guinea Pig: 100%; Horse: 93%; Human: 100%; Mouse: 79%; Rabbit: 79%; Rat: 93%  |
| Formulation:            | Liquid. Purified antibody supplied in 1x PBS buffer with 0.09% (w/v) sodium azide and 2% sucrose.<br><i>Note that this product is shipped as lyophilized powder to China customers.</i>  |
| Concentration:          | lot specific   |
| Purification:           | Affinity Purified  |
| Conjugation:            | Unconjugated   |
| Storage:                | For short term use, store at 2-8°C up to 1 week. For long term storage, store at -20°C in small aliquots to prevent freeze-thaw cycles.  |
| Stability:              | Shelf life: one year from despatch.  |
| Predicted Protein Size: | 90kDa  |
| Gene Name:              | RAS guanyl releasing protein 1   |
| Database Link:          | <a href="#">NP_005730</a><br><a href="#">Entrez Gene 10125 Human</a><br><a href="#">O95267</a>   |
| Background:             | This gene is a member of a family of genes characterized by the presence of a Ras superfamily guanine nucleotide exchange factor (GEF) domain. It functions as a diacylglycerol (DAG)-regulated nucleotide exchange factor specifically activating Ras through the exchange of bound GDP for GTP. It activates the Erk/MAP kinase cascade and regulates T-cells and B-cells development, homeostasis and differentiation. Alternatively spliced transcript variants encoding different isoforms have been identified. Altered expression of the different isoforms of this protein may be a cause of susceptibility to systemic lupus erythematosus (SLE). |

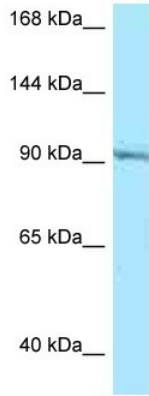


[View online »](#)

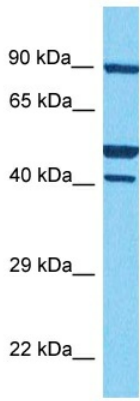
**Synonyms:** CALDAG-GEFI; CalDAG-GEFI; hRasGRP1; MGC129998; MGC129999; RASGRP; V

**Protein Pathways:** MAPK signaling pathway, T cell receptor signaling pathway

**Product images:**



WB Suggested Anti-RASGRP1 Antibody  
 Titration: 1.0 ug/ml  
 Positive Control: Jurkat Whole Cell RASGRP1 is supported by BioGPS gene expression data to be expressed in Jurkat



Host: Rabbit  
 Target Name: RASGRP1  
 Sample Type: HCT116 Cell Lysate  
 Antibody Dilution: 1.0µg/ml

Host: Rabbit  
 Target Name: RASGRP1  
 Sample Tissue: Human HCT116 Whole Cell  
 Antibody Dilution: 3ug/ml