

## Product datasheet for **TA358533**

### Ephrin B3 (EFNB3) Rabbit Polyclonal Antibody

#### Product data:

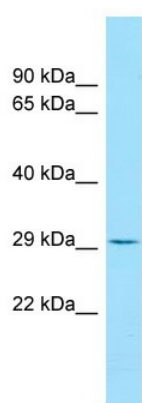
Product Type:	Primary Antibodies
Applications:	WB
Reactivity:	Human
Host:	Rabbit
Clonality:	Polyclonal
Specificity:	<b>Expected reactivity:</b> Cow, Dog, Guinea Pig, Horse, Human, Mouse, Rabbit, Rat <b>Homology:</b> Cow: 100%; Dog: 100%; Guinea Pig: 100%; Horse: 100%; Human: 100%; Mouse: 93%; Rabbit: 100%; Rat: 100%
Formulation:	Liquid. Purified antibody supplied in 1x PBS buffer with 0.09% (w/v) sodium azide and 2% sucrose. <i>Note that this product is shipped as lyophilized powder to China customers.</i>
Concentration:	lot specific
Purification:	Affinity Purified
Conjugation:	Unconjugated
Storage:	For short term use, store at 2-8°C up to 1 week. For long term storage, store at -20°C in small aliquots to prevent freeze-thaw cycles.
Stability:	Shelf life: one year from despatch.
Predicted Protein Size:	33kDa
Gene Name:	ephrin B3
Database Link:	<a href="#">NP_001397</a> <a href="#">Entrez Gene 1949 Human</a> <a href="#">Q15768</a>
Background:	EFNB3, a member of the ephrin gene family, is important in brain development as well as in its maintenance. Moreover, since levels of EFNB3 expression were particularly high in several forebrain subregions compared to other brain subregions, it may play a pivotal role in forebrain function.
Synonyms:	EFL6; ephrin-B3; EPLG8; LERK-8; LERK8
Protein Families:	Druggable Genome, Transmembrane



[View online »](#)

Protein Pathways: Axon guidance

**Product images:**



WB Suggested Anti-EFNB3 Antibody  
Titration: 1.0 ug/ml  
Positive Control: U937 Whole Cell