

Product datasheet for **TA358532**

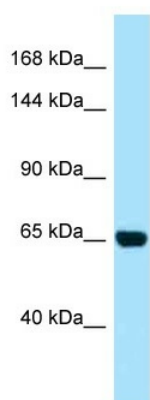
PALB2 Rabbit Polyclonal Antibody

Product data:

Product Type:	Primary Antibodies
Applications:	WB
Reactivity:	Human
Host:	Rabbit
Clonality:	Polyclonal
Specificity:	Expected reactivity: Human Homology: Human: 100%
Formulation:	Liquid. Purified antibody supplied in 1x PBS buffer with 0.09% (w/v) sodium azide and 2% sucrose. <i>Note that this product is shipped as lyophilized powder to China customers.</i>
Concentration:	lot specific
Purification:	Affinity Purified
Conjugation:	Unconjugated
Storage:	For short term use, store at 2-8°C up to 1 week. For long term storage, store at -20°C in small aliquots to prevent freeze-thaw cycles.
Stability:	Shelf life: one year from despatch.
Predicted Protein Size:	64kDa
Gene Name:	partner and localizer of BRCA2
Database Link:	NP_078951 Entrez Gene 79728 Human Q86YC2
Background:	This gene encodes a protein that may function in tumor suppression. This protein binds to and colocalizes with the breast cancer 2 early onset protein (BRCA2) in nuclear foci and likely permits the stable intranuclear localization and accumulation of BRCA2.
Synonyms:	DKFZp6671166; DKFZp686E1054; FANCN; FLJ21816



[View online »](#)

Product images:

WB Suggested Anti-PALB2 Antibody
Titration: 1.0 ug/ml
Positive Control: HeLa Whole Cell
PALB2 is supported by BioGPS gene expression data to be expressed in HeLa