

## Product datasheet for **TA358527**

### CD226 Rabbit Polyclonal Antibody

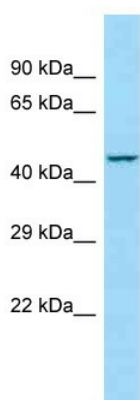
#### Product data:

Product Type:	Primary Antibodies
Applications:	WB
Reactivity:	Human
Host:	Rabbit
Clonality:	Polyclonal
Specificity:	<b>Expected reactivity:</b> Guinea Pig, Horse, Human, Rat <b>Homology:</b> Guinea Pig: 80%; Horse: 86%; Human: 100%; Rat: 87%
Formulation:	Liquid. Purified antibody supplied in 1x PBS buffer with 0.09% (w/v) sodium azide and 2% sucrose. <i>Note that this product is shipped as lyophilized powder to China customers.</i>
Concentration:	lot specific
Purification:	Affinity Purified
Conjugation:	Unconjugated
Storage:	For short term use, store at 2-8°C up to 1 week. For long term storage, store at -20°C in small aliquots to prevent freeze-thaw cycles.
Stability:	Shelf life: one year from despatch.
Predicted Protein Size:	38kDa
Gene Name:	CD226 molecule
Database Link:	<a href="#">NP_006557</a> <a href="#">Entrez Gene 10666 Human</a> <a href="#">Q15762</a>
Background:	This gene encodes a glycoprotein expressed on the surface of NK cells, platelets, monocytes and a subset of T cells. It is a member of the Ig-superfamily containing 2 Ig-like domains of the V-set. The protein mediates cellular adhesion of platelets and megakaryocytic cells to vascular endothelial cells. The protein also plays a role in megakaryocytic cell maturation.
Synonyms:	DNAM-1; DNAM1; PTA1; TLISA1
Protein Families:	Druggable Genome, Transmembrane
Protein Pathways:	Cell adhesion molecules (CAMs)



[View online »](#)

Product images:



WB Suggested Anti-CD226 Antibody  
Titration: 1.0 ug/ml  
Positive Control: RPMI-8226 Whole Cell