

Product datasheet for **TA358524**

RAB11A Rabbit Polyclonal Antibody

Product data:

Product Type:	Primary Antibodies
Applications:	IHC, WB
Reactivity:	Human
Host:	Rabbit
Clonality:	Polyclonal
Specificity:	Expected reactivity: Cow, Dog, Guinea Pig, Horse, Human, Mouse, Rabbit, Rat, Sheep, Zebrafish Homology: Cow: 100%; Dog: 100%; Guinea Pig: 100%; Horse: 100%; Human: 100%; Mouse: 100%; Rabbit: 100%; Rat: 100%; Sheep: 100%; Zebrafish: 93%
Formulation:	Liquid. Purified antibody supplied in 1x PBS buffer with 0.09% (w/v) sodium azide and 2% sucrose.
Concentration:	lot specific
Purification:	Affinity Purified
Conjugation:	Unconjugated
Storage:	For short term use, store at 2-8°C up to 1 week. For long term storage, store at -20°C in small aliquots to prevent freeze-thaw cycles.
Stability:	Shelf life: one year from despatch.
Predicted Protein Size:	24kDa
Gene Name:	RAB11A, member RAS oncogene family
Database Link:	NP_004654 Entrez Gene 8766 Human P62491
Background:	The protein encoded by this gene belongs to the Rab family of the small GTPase superfamily. It is associated with both constitutive and regulated secretory pathways, and may be involved in protein transport. Two transcript variants encoding different isoforms have been found for this gene.
Synonyms:	MGC1490; Rab-11; RAB11; YL8
Protein Families:	Druggable Genome



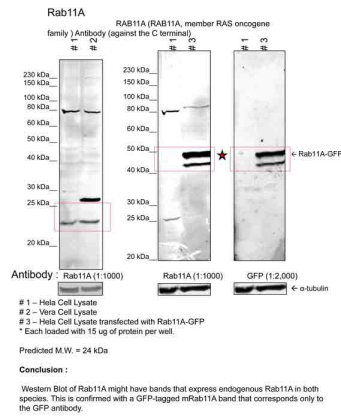
[View online »](#)

Protein Pathways: Endocytosis

Product images:

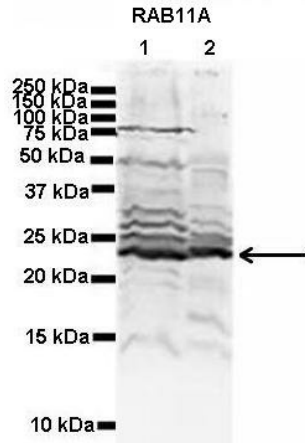


RAB11A antibody - C-terminal region (TA358524) validated by WB using Placenta Lysate at 1ug/ml.



human HeLa Cells and Monkey Vera

Image submitted by Dr. Jakob Szeleto from Dr. Lupashin's lab at The University of Arkansas



See Immunoblot 3 Data and Customer Feedback for more information

Lanes:

1. Human NT-2 cells (60ug) lysate 2. Mouse WT brain extract (80ug)

Primary Antibody Dilution:

2ug/ml

Secondary Antibody:

IRDye 800CW goat anti-rabbit from Li-COR Bioscience

Secondary Antibody Dilution:

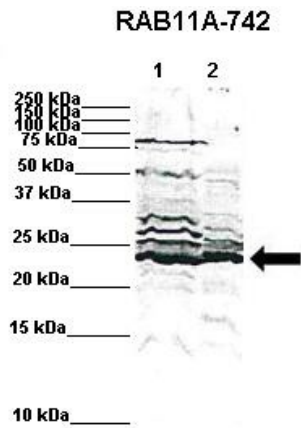
1: 20,000

Gene Name:

Rab11a

Submitted by:

Dr. Yuzhi Chen, University of Arkansas for Medical Science



WB Suggested Anti-RAB11A Antibody

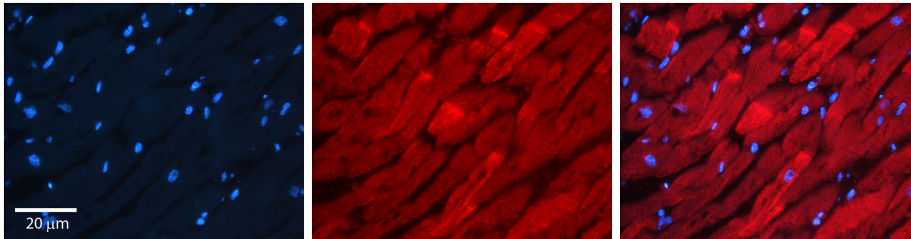
Positive Control: Lane 1: 60ug human NT2 cell line Lane 2: 80ug mouse brain extract

Primary Antibody Dilution : 1:500

Secondary Antibody : IRDye 800 CW goat anti-rabbit from Li-COR Bioscience

Secondary Antibody Dilution : 1:20,000

Submitted by: Dr. Yuzhi Chen, University of Arkansas for Medical Science



Rabbit Anti-RAB11A Antibody

Catalog Number: TA358524

Formalin Fixed Paraffin Embedded Tissue:

Human heart Tissue

Observed Staining: Plasma membrane in intercalated disc, cytoplasmic

Primary Antibody Concentration: 1:100

Other Working Concentrations: N/A

Secondary Antibody: Donkey anti-Rabbit-Cy3

Secondary Antibody Concentration: 1:200

Magnification: 20X

Exposure Time: 0.5–2.0 sec