

## Product datasheet for **TA358522**

### CYP4F2 Rabbit Polyclonal Antibody

#### Product data:

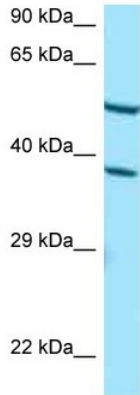
Product Type:	Primary Antibodies
Applications:	WB
Reactivity:	Human
Host:	Rabbit
Clonality:	Polyclonal
Specificity:	<b>Expected reactivity:</b> Cow, Dog, Goat, Guinea Pig, Horse, Human, Mouse, Rabbit, Rat, Sheep <b>Homology:</b> Cow: 92%; Dog: 86%; Goat: 83%; Guinea Pig: 92%; Horse: 86%; Human: 100%; Mouse: 93%; Rabbit: 93%; Rat: 93%; Sheep: 86%
Formulation:	Liquid. Purified antibody supplied in 1x PBS buffer with 0.09% (w/v) sodium azide and 2% sucrose. <i>Note that this product is shipped as lyophilized powder to China customers.</i>
Concentration:	lot specific
Purification:	Affinity Purified
Conjugation:	Unconjugated
Storage:	For short term use, store at 2-8°C up to 1 week. For long term storage, store at -20°C in small aliquots to prevent freeze-thaw cycles.
Stability:	Shelf life: one year from despatch.
Predicted Protein Size:	60kDa
Gene Name:	cytochrome P450 family 4 subfamily F member 2
Database Link:	<a href="#">NP_001073</a> <a href="#">Entrez Gene 8529 Human</a> <a href="#">P78329</a>
Background:	This gene encodes a member of the cytochrome P450 superfamily of enzymes. The cytochrome P450 proteins are monooxygenases which catalyze many reactions involved in drug metabolism and synthesis of cholesterol, steroids and other lipids. This protein localizes to the endoplasmic reticulum. The enzyme starts the process of inactivating and degrading leukotriene B <sub>4</sub> , a potent mediator of inflammation. This gene is part of a cluster of cytochrome P450 genes on chromosome 19. Another member of this family, CYP4F11, is approximately 16 kb away.



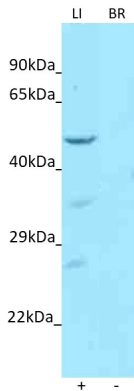
[View online »](#)

**Synonyms:** CPF2; CYP1F2  
**Protein Families:** Druggable Genome, P450, Transmembrane  
**Protein Pathways:** Arachidonic acid metabolism, Metabolic pathways

**Product images:**



WB Suggested Anti-CYP4F2 Antibody  
 Titration: 1.0 ug/ml  
 Positive Control: HepG2 Whole Cell CYP4F2 is strongly supported by BioGPS gene expression data to be expressed in Human HepG2 cells



Host: Rabbit  
 Target name: CYP4F2  
 Positive control: ~25ug Human Liver (LI)  
 Negative control: ~25ug Human Brain (BR)  
 Antibody concentration: 1ug/ml

Host: Rabbit  
 Target: CYP4F2  
 Positive control (+): Human Liver (LI)  
 Negative control (-): Human Brain (BR)  
 Antibody concentration: 1ug/ml