

Product datasheet for **TA358520**

BMP3 Rabbit Polyclonal Antibody

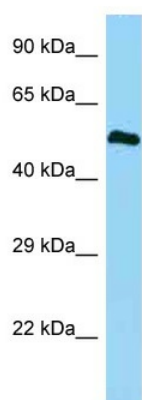
Product data:

Product Type:	Primary Antibodies
Applications:	WB
Reactivity:	Human
Host:	Rabbit
Clonality:	Polyclonal
Specificity:	Expected reactivity: Cow, Dog, Guinea Pig, Horse, Human, Mouse, Pig, Rabbit, Rat Homology: Cow: 86%; Dog: 86%; Guinea Pig: 92%; Horse: 86%; Human: 100%; Mouse: 83%; Pig: 93%; Rabbit: 93%; Rat: 93%
Formulation:	Liquid. Purified antibody supplied in 1x PBS buffer with 0.09% (w/v) sodium azide and 2% sucrose. <i>Note that this product is shipped as lyophilized powder to China customers.</i>
Concentration:	lot specific
Purification:	Affinity Purified
Conjugation:	Unconjugated
Storage:	For short term use, store at 2-8°C up to 1 week. For long term storage, store at -20°C in small aliquots to prevent freeze-thaw cycles.
Stability:	Shelf life: one year from despatch.
Predicted Protein Size:	52kDa
Gene Name:	bone morphogenetic protein 3
Database Link:	NP_001192 Entrez Gene 651 Human P12645
Background:	BMP3 belongs to the transforming growth factor-beta (TGFB) superfamily. Bone morphogenic protein, also known as osteogenin, induces bone formation.
Synonyms:	BMP-3; BMP-3A; Osteogenin
Protein Families:	Druggable Genome, Secreted Protein



[View online »](#)

Product images:



WB Suggested Anti-BMP3 Antibody
Titration: 1.0 ug/ml
Positive Control: Fetal Heart