

Product datasheet for **TA358515**

RPS3 Rabbit Polyclonal Antibody

Product data:

Product Type:	Primary Antibodies
Applications:	WB
Reactivity:	Human
Host:	Rabbit
Clonality:	Polyclonal
Specificity:	Expected reactivity: Cow, Dog, Guinea Pig, Horse, Human, Mouse, Rabbit, Rat, Zebrafish Homology: Cow: 100%; Dog: 100%; Guinea Pig: 100%; Horse: 100%; Human: 100%; Mouse: 100%; Rabbit: 100%; Rat: 100%; Zebrafish: 100%
Formulation:	Liquid. Purified antibody supplied in 1x PBS buffer with 0.09% (w/v) sodium azide and 2% sucrose. <i>Note that this product is shipped as lyophilized powder to China customers.</i>
Concentration:	lot specific
Purification:	Affinity Purified
Conjugation:	Unconjugated
Storage:	For short term use, store at 2-8°C up to 1 week. For long term storage, store at -20°C in small aliquots to prevent freeze-thaw cycles.
Stability:	Shelf life: one year from despatch.
Predicted Protein Size:	27kDa
Gene Name:	ribosomal protein S3
Database Link:	NP_000996 Entrez Gene 6188 Human P23396



[View online »](#)

Background:

Ribosomes, the organelles that catalyze protein synthesis, consist of a small 40S subunit and a large 60S subunit. Together these subunits are composed of 4 RNA species and approximately 80 structurally distinct proteins. This gene encodes a ribosomal protein that is a component of the 40S subunit, where it forms part of the domain where translation is initiated. The protein belongs to the S3P family of ribosomal proteins. Studies of the mouse and rat proteins have demonstrated that the protein has an extraribosomal role as an endonuclease involved in the repair of UV-induced DNA damage. The protein appears to be located in both the cytoplasm and nucleus but not in the nucleolus.

Synonyms:

FLJ26283; FLJ27450; MGC87870

Protein Pathways:

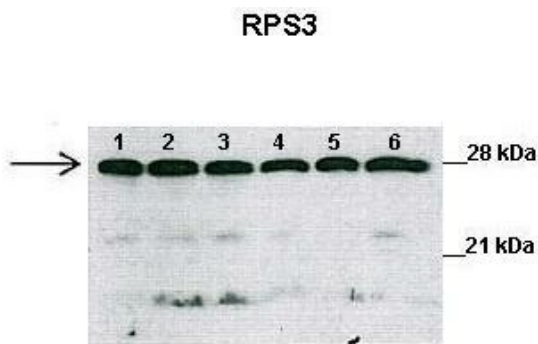
Ribosome

Product images:


WB Suggested Anti-RPS3 Antibody

Titration: 1.0 ug/ml

Positive Control: A549 Whole Cell RPS3 is supported by BioGPS gene expression data to be expressed in A549



Lanes:

1: *Maduca sexta* intestine lysate-untreated, 2: *Maduca sexta* intestine lysate-2 hour crytoxin, 3: *Maduca sexta* intestine lysate-4 hour crytoxin, 4: *Maduca sexta* intestine lysate-6 hour crytoxin, 5: *Maduca sexta* intestine lysate-12 hour crytoxin, 6: *Maduca sexta* intestine lysate-24 hour crytoxin.

Primary Antibody Dilution:

1:1000

Secondary Antibody:

Anti-rabbit HRP

Secondary Antibody Dilution:

1:10,000

Gene Name:

RPS3

Submitted by:

Dra. Helena Porta Ducoing and Biol. Gladys Jimenez Nopala

See Immunoblot 2 Data and customer Feedback for more Information