

Product datasheet for **TA358509**

NCR1 Rabbit Polyclonal Antibody

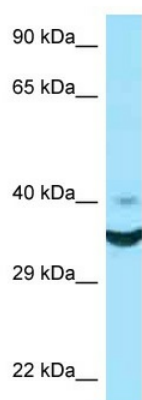
Product data:

Product Type:	Primary Antibodies
Applications:	WB
Reactivity:	Human
Host:	Rabbit
Clonality:	Polyclonal
Specificity:	Expected reactivity: Human Homology: Human: 100%
Formulation:	Liquid. Purified antibody supplied in 1x PBS buffer with 0.09% (w/v) sodium azide and 2% sucrose. <i>Note that this product is shipped as lyophilized powder to China customers.</i>
Concentration:	lot specific
Purification:	Affinity Purified
Conjugation:	Unconjugated
Storage:	For short term use, store at 2-8°C up to 1 week. For long term storage, store at -20°C in small aliquots to prevent freeze-thaw cycles.
Stability:	Shelf life: one year from despatch.
Predicted Protein Size:	33kDa
Gene Name:	natural cytotoxicity triggering receptor 1
Database Link:	NP_004820 Entrez Gene 9437 Human O76036
Background:	NCR1 is a cytotoxicity-activating receptor that may contribute to the increased efficiency of activated natural killer (NK) cells to mediate tumor cell lysis.
Synonyms:	CD335; FLJ99094; hNKp46; LY94; NK-p46; NKP46
Protein Families:	Druggable Genome, Transmembrane
Protein Pathways:	Natural killer cell mediated cytotoxicity



[View online »](#)

Product images:



WB Suggested Anti-NCR1 Antibody
Titration: 1.0 ug/ml
Positive Control: HCT15 Whole Cell