

## Product datasheet for **TA358495**

### serum amyloid A2 (SAA2) Rabbit Polyclonal Antibody

#### Product data:

Product Type:	Primary Antibodies
Applications:	WB
Reactivity:	Human
Host:	Rabbit
Clonality:	Polyclonal
Specificity:	<b>Expected reactivity:</b> Cow, Dog, Goat, Guinea Pig, Horse, Human, Mouse, Pig, Rabbit, Rat, Sheep <b>Homology:</b> Cow: 93%; Dog: 93%; Goat: 93%; Guinea Pig: 86%; Horse: 100%; Human: 100%; Mouse: 93%; Pig: 92%; Rabbit: 92%; Rat: 93%; Sheep: 93%
Formulation:	Liquid. Purified antibody supplied in 1x PBS buffer with 0.09% (w/v) sodium azide and 2% sucrose. <i>Note that this product is shipped as lyophilized powder to China customers.</i>
Concentration:	lot specific
Purification:	Affinity Purified
Conjugation:	Unconjugated
Storage:	For short term use, store at 2-8°C up to 1 week. For long term storage, store at -20°C in small aliquots to prevent freeze-thaw cycles.
Stability:	Shelf life: one year from despatch.
Predicted Protein Size:	13kDa
Gene Name:	serum amyloid A2
Database Link:	<a href="#">NP_110381</a> <a href="#">Entrez Gene 6289 Human</a> <a href="#">P0DJ19</a> <a href="#">x000D</a> <a href="#">x000D</a>
Background:	SAA2 is a major acute phase reactant and apolipoprotein of the HDL complex.
Synonyms:	SAA
Protein Families:	Druggable Genome

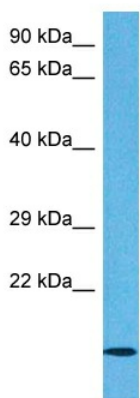


[View online »](#)

Product images:



WB Suggested Anti-SAA2 Antibody  
Titration: 1.0 ug/ml  
Positive Control: 293T Whole Cell



Host: Rabbit  
Target Name: SAA2  
Sample Type: Ovary Tumor Lysate  
Antibody Dilution: 1.0µg/ml

Host: Rabbit  
Target Name: SAA2  
Sample Tissue: Human Ovary Tumor  
Antibody Dilution: 1 ug/ml