

Product datasheet for **TA358494**

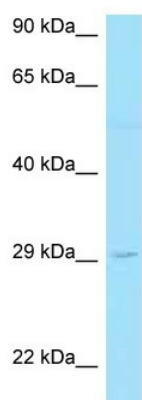
NTAL (LAT2) Rabbit Polyclonal Antibody

Product data:

Product Type:	Primary Antibodies
Applications:	WB
Reactivity:	Human
Host:	Rabbit
Clonality:	Polyclonal
Specificity:	Expected reactivity: Cow, Dog, Horse, Human, Mouse, Pig, Rabbit, Rat, Yeast Homology: Cow: 91%; Dog: 91%; Horse: 91%; Human: 100%; Mouse: 91%; Pig: 91%; Rabbit: 91%; Rat: 91%; Yeast: 91%
Formulation:	Liquid. Purified antibody supplied in 1x PBS buffer with 0.09% (w/v) sodium azide and 2% sucrose. <i>Note that this product is shipped as lyophilized powder to China customers.</i>
Concentration:	lot specific
Purification:	Affinity Purified
Conjugation:	Unconjugated
Storage:	For short term use, store at 2-8°C up to 1 week. For long term storage, store at -20°C in small aliquots to prevent freeze-thaw cycles.
Stability:	Shelf life: one year from despatch.
Predicted Protein Size:	26kDa
Gene Name:	linker for activation of T-cells family member 2
Database Link:	NP_054865 Entrez Gene 7462 Human Q9GZY6
Background:	This gene is one of the contiguous genes at 7q11.23 commonly deleted in Williams syndrome, a multisystem developmental disorder. This gene consists of at least 14 exons, and its alternative splicing generates 3 transcript variants, all encoding the same protein.
Synonyms:	HSPC046; LAB; NTAL; OTTHUMP00000179119; WBS15; WBSCR5; WBSCR15; WSCR5
Protein Families:	Transmembrane



[View online »](#)

Product images:

WB Suggested Anti-LAT2 Antibody
Titration: 1.0 ug/ml
Positive Control: RPMI-8226 Whole Cell/LAT2 is supported by BioGPS gene expression data to be expressed in RPMI 8226