

## Product datasheet for **TA358485**

### Ghrelin Receptor (GHSR) Rabbit Polyclonal Antibody

#### Product data:

Product Type:	Primary Antibodies
Applications:	WB
Reactivity:	Human
Host:	Rabbit
Clonality:	Polyclonal
Specificity:	<b>Expected reactivity:</b> Cow, Dog, Guinea Pig, Horse, Human, Mouse, Rabbit, Rat, Sheep <b>Homology:</b> Cow: 100%; Dog: 79%; Guinea Pig: 100%; Horse: 100%; Human: 100%; Mouse: 93%; Rabbit: 86%; Rat: 100%; Sheep: 100%
Formulation:	Liquid. Purified antibody supplied in 1x PBS buffer with 0.09% (w/v) sodium azide and 2% sucrose. <i>Note that this product is shipped as lyophilized powder to China customers.</i>
Concentration:	lot specific
Purification:	Affinity Purified
Conjugation:	Unconjugated
Storage:	For short term use, store at 2-8°C up to 1 week. For long term storage, store at -20°C in small aliquots to prevent freeze-thaw cycles.
Stability:	Shelf life: one year from despatch.
Predicted Protein Size:	40kDa
Gene Name:	growth hormone secretagogue receptor
Database Link:	<a href="#">NP_940799</a> <a href="#">Entrez Gene 2693 Human</a> <a href="#">Q92847</a>



[View online »](#)

**Background:**

This gene encodes a member of the G-protein coupled receptor family. The encoded protein may play a role in energy homeostasis and regulation of body weight. Two identified transcript variants are expressed in several tissues and are evolutionary conserved in fish and swine. One transcript, 1a, excises an intron and encodes the functional protein; this protein is the receptor for the Ghrelin ligand and defines a neuroendocrine pathway for growth hormone release. The second transcript (1b) retains the intron and does not function as a receptor for Ghrelin; however, it may function to attenuate activity of isoform 1a. Mutations in this gene are associated with autosomal idiopathic short stature.

**Synonyms:**

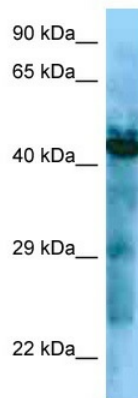
GHRP; GHS-R; OTTHUMP00000211093

**Protein Families:**

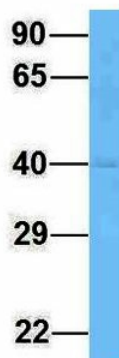
Druggable Genome, GPCR, Transmembrane

**Protein Pathways:**

Neuroactive ligand-receptor interaction

**Product images:**


WB Suggested Anti-GHSR Antibody  
Titration: 1.0 ug/ml  
Positive Control: ACHN Whole Cell

**GHSR**


Rabbit Anti-GHSR  
Sample Type: Human 293T  
Antibody Concentration: 1ug/mL

Host: Rabbit  
Target Name: GHSR  
Sample Type: Human 293T  
Antibody Dilution: 1.0ug/ml