

Product datasheet for **TA358484**

CRF1 (CRHR1) Rabbit Polyclonal Antibody

Product data:

Product Type:	Primary Antibodies
Applications:	WB
Reactivity:	Human, Mouse
Host:	Rabbit
Clonality:	Polyclonal
Specificity:	Expected reactivity: Cow, Dog, Guinea Pig, Horse, Human, Mouse, Rabbit, Rat, Sheep, Zebrafish Homology: Cow: 100%; Dog: 100%; Guinea Pig: 100%; Horse: 100%; Human: 100%; Mouse: 100%; Rabbit: 100%; Rat: 100%; Sheep: 100%; Zebrafish: 100%
Formulation:	Liquid. Purified antibody supplied in 1x PBS buffer with 0.09% (w/v) sodium azide and 2% sucrose. <i>Note that this product is shipped as lyophilized powder to China customers.</i>
Concentration:	lot specific
Purification:	Affinity Purified
Conjugation:	Unconjugated
Storage:	For short term use, store at 2-8°C up to 1 week. For long term storage, store at -20°C in small aliquots to prevent freeze-thaw cycles.
Stability:	Shelf life: one year from despatch.
Predicted Protein Size:	44kDa
Gene Name:	corticotropin releasing hormone receptor 1
Database Link:	NP_001138620 Entrez Gene 12921 Mouse Entrez Gene 1394 Human P34998-4



[View online »](#)

Background:

This gene encodes a G-protein coupled receptor that binds neuropeptides of the corticotropin releasing hormone family that are major regulators of the hypothalamic-pituitary-adrenal pathway. The encoded protein is essential for the activation of signal transduction pathways that regulate diverse physiological processes including stress, reproduction, immune response and obesity. Alternative splicing results in multiple transcript variants one of which is a non-coding read-through transcript with the neighboring gene MGC57346.

Synonyms:

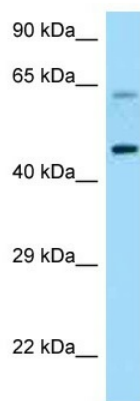
CRF-R; CRF1; CRFR; CRFR1; CRH-R1h; CRHR; CRHR1f

Protein Families:

Druggable Genome, GPCR, Transmembrane

Protein Pathways:

Long-term depression, Neuroactive ligand-receptor interaction

Product images:


WB Suggested Anti-CRHR1 Antibody
Titration: 1.0 ug/ml
Positive Control: Hela Whole Cell



Host: Rabbit
Target Name: Crhr1
Sample Type: Mouse Testis Lysate
Antibody Dilution: 1.0µg/ml

Host: Mouse
Target Name: CRHR1
Sample Tissue: Mouse Testis
Antibody Dilution: 1 ug/ml