

## Product datasheet for **TA358481**

### MCHR (MCHR1) Rabbit Polyclonal Antibody

#### Product data:

Product Type:	Primary Antibodies
Applications:	WB
Reactivity:	Human
Host:	Rabbit
Clonality:	Polyclonal
Specificity:	<b>Expected reactivity:</b> Cow, Dog, Guinea Pig, Horse, Human, Mouse, Pig, Rabbit, Rat <b>Homology:</b> Cow: 86%; Dog: 92%; Guinea Pig: 81%; Horse: 86%; Human: 100%; Mouse: 86%; Pig: 100%; Rabbit: 93%; Rat: 93%
Formulation:	Liquid. Purified antibody supplied in 1x PBS buffer with 0.09% (w/v) sodium azide and 2% sucrose. <i>Note that this product is shipped as lyophilized powder to China customers.</i>
Concentration:	lot specific
Purification:	Affinity Purified
Conjugation:	Unconjugated
Storage:	For short term use, store at 2-8°C up to 1 week. For long term storage, store at -20°C in small aliquots to prevent freeze-thaw cycles.
Stability:	Shelf life: one year from despatch.
Predicted Protein Size:	32kDa
Gene Name:	melanin concentrating hormone receptor 1
Database Link:	<a href="#">NP_005288</a> <a href="#">Entrez Gene 2847 Human</a> <a href="#">Q5IFH6</a>
Background:	The protein encoded by this gene, a member of the G protein-coupled receptor family 1, is an integral plasma membrane protein which binds melanin-concentrating hormone. The encoded protein can inhibit cAMP accumulation and stimulate intracellular calcium flux, and is probably involved in the neuronal regulation of food consumption. Although structurally similar to somatostatin receptors, this protein does not seem to bind somatostatin.
Synonyms:	GPR24; MCH-1R; MCH-R1; MCH1R; MCHR; MCHR-1; MGC32129; SLC-1; SLC1

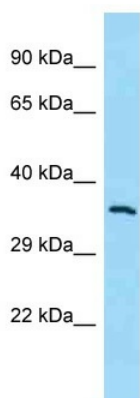


[View online »](#)

Protein Families: Druggable Genome, GPCR, Transmembrane

Protein Pathways: Neuroactive ligand-receptor interaction

### Product images:



WB Suggested Anti-MCHR1 Antibody  
Titration: 1.0 ug/ml  
Positive Control: 293T Whole Cell MCHR1 is supported by BioGPS gene expression data to be expressed in HEK293T