

Product datasheet for **TA358470**

SPRR1B Rabbit Polyclonal Antibody

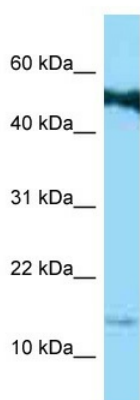
Product data:

Product Type:	Primary Antibodies
Applications:	IHC, WB
Reactivity:	Human, Mouse
Host:	Rabbit
Clonality:	Polyclonal
Specificity:	Expected reactivity: Cow, Horse, Human, Mouse, Pig, Rabbit, Rat Homology: Cow: 85%; Horse: 100%; Human: 100%; Mouse: 85%; Pig: 92%; Rabbit: 92%; Rat: 85%
Formulation:	Liquid. Purified antibody supplied in 1x PBS buffer with 0.09% (w/v) sodium azide and 2% sucrose. <i>Note that this product is shipped as lyophilized powder to China customers.</i>
Concentration:	lot specific
Purification:	Affinity Purified
Conjugation:	Unconjugated
Storage:	For short term use, store at 2-8°C up to 1 week. For long term storage, store at -20°C in small aliquots to prevent freeze-thaw cycles.
Stability:	Shelf life: one year from despatch.
Predicted Protein Size:	10kDa
Gene Name:	small proline rich protein 1B
Database Link:	NP_003116 Entrez Gene 6699 Human P22528
Background:	SPRR1B is a cross-linked envelope protein of keratinocytes. It is a keratinocyte protein that first appears in the cell cytosol, but ultimately becomes cross-linked to membrane proteins by transglutaminase. All that results in the formation of an insoluble envelope beneath the plasma membrane. SPRR1B can function as both amine donor and acceptor in transglutaminase-mediated cross-linkage.
Synonyms:	CORNIFIN; GADD33; MGC61901; SPR-IB; SPRR1



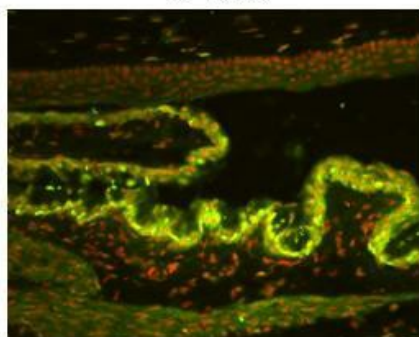
[View online »](#)

Product images:



WB Suggested Anti-SPRR1B Antibody
Titration: 1.0 ug/ml
Positive Control: Jurkat Whole Cell

SPRR1b



Green: SPRR1b
Red: Nucleus

Researcher: Dr. Cintia S. De Paiva, Baylor College of Medicine
Application: IHC
Species+tissue/cell type: Mouse eyeball section
Primary antibody dilution: 1:50
Secondary antibody: Goat anti-rabbit-AlexaFluor 488
Secondary antibody dilution: 1:50

See IHC 1 Data and customer Feedback for more Information