

Product datasheet for **TA358469**

Rpl22 Rabbit Polyclonal Antibody

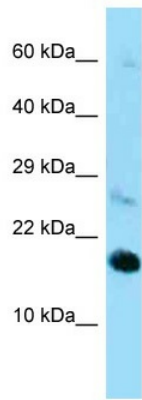
Product data:

| | |
|-------------------------|--|
| Product Type: | Primary Antibodies |
| Applications: | WB |
| Reactivity: | Mouse |
| Host: | Rabbit |
| Clonality: | Polyclonal |
| Specificity: | Expected reactivity: Cow, Dog, Guinea Pig, Horse, Human, Mouse, Rabbit, Rat, Zebrafish Homology: Cow: 100%; Dog: 100%; Guinea Pig: 100%; Horse: 100%; Human: 100%; Mouse: 100%; Rabbit: 100%; Rat: 100%; Zebrafish: 93% |
| Formulation: | Liquid. Purified antibody supplied in 1x PBS buffer with 0.09% (w/v) sodium azide and 2% sucrose. <i>Note that this product is shipped as lyophilized powder to China customers.</i> |
| Concentration: | lot specific |
| Purification: | Affinity Purified |
| Conjugation: | Unconjugated |
| Storage: | For short term use, store at 2-8°C up to 1 week. For long term storage, store at -20°C in small aliquots to prevent freeze-thaw cycles. |
| Stability: | Shelf life: one year from despatch. |
| Predicted Protein Size: | 15kDa |
| Gene Name: | ribosomal protein L22 |
| Database Link: | NP_033105 Entrez Gene 19934 Mouse Q4VAG4 |
| Background: | The function of this protein remains unknown. |
| Synonyms: | EAP; HBP15; HBP15/L22 |

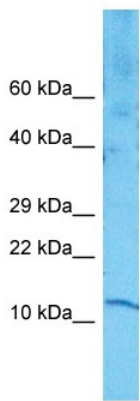


[View online »](#)

Product images:



WB Suggested Anti-Rpl22 Antibody
Titration: 1.0 ug/ml
Positive Control: Mouse Heart



Host: Rabbit
Target Name: RPL22
Sample Type: NIH3T3 Cell Lysate
Antibody Dilution: 1.0µg/ml

Host: Rabbit
Target Name: RPL22
Sample Tissue: Mouse NIH3T3 Whole Cell
Antibody Dilution: 1ug/ml