

Product datasheet for **TA358468**

HTRA1 Rabbit Polyclonal Antibody

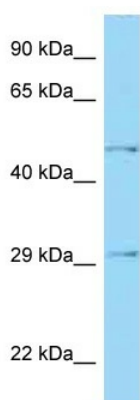
Product data:

Product Type:	Primary Antibodies
Applications:	IHC, WB
Reactivity:	Human
Host:	Rabbit
Clonality:	Polyclonal
Specificity:	Expected reactivity: Cow, Human, Mouse, Pig, Rat Homology: Cow: 100%; Human: 100%; Mouse: 92%; Pig: 100%; Rat: 92%
Formulation:	Liquid. Purified antibody supplied in 1x PBS buffer with 0.09% (w/v) sodium azide and 2% sucrose. <i>Note that this product is shipped as lyophilized powder to China customers.</i>
Concentration:	lot specific
Purification:	Affinity Purified
Conjugation:	Unconjugated
Storage:	For short term use, store at 2-8°C up to 1 week. For long term storage, store at -20°C in small aliquots to prevent freeze-thaw cycles.
Stability:	Shelf life: one year from despatch.
Predicted Protein Size:	53kDa
Gene Name:	HtrA serine peptidase 1
Database Link:	NP_002766 Entrez Gene 5654 Human Q92743
Background:	This gene encodes a member of the trypsin family of serine proteases. This protein is a secreted enzyme that is proposed to regulate the availability of insulin-like growth factors (IGFs) by cleaving IGF-binding proteins. It has also been suggested to be a regulator of cell growth. Variations in the promoter region of this gene are the cause of susceptibility to age-related macular degeneration type 7.
Synonyms:	ARMD7; HTRA; IGFBP5-protease; L56; ORF480; PRSS11
Protein Families:	Druggable Genome, Protease, Secreted Protein

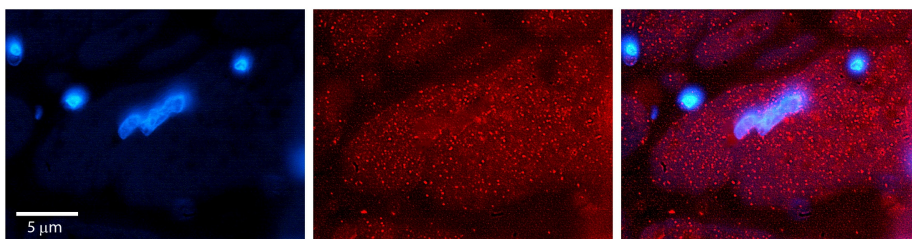


[View online »](#)

Product images:



WB Suggested Anti-HTRA1 Antibody
Titration: 1.0 ug/ml
Positive Control: Fetal Kidney



Rabbit Anti-HTRA1 Antibody
Catalog Number: TA358468
Formalin Fixed Paraffin Embedded Tissue:
Human heart Tissue
Observed Staining: Cytoplasmic
Primary Antibody Concentration: 1:100
Other Working Concentrations: 1:600
Secondary Antibody: Donkey anti-Rabbit-Cy3
Secondary Antibody Concentration: 1:200
Magnification: 20X
Exposure Time: 0.5–2.0 sec