

Product datasheet for **TA358460**

CD32B (FCGR2B) Rabbit Polyclonal Antibody

Product data:

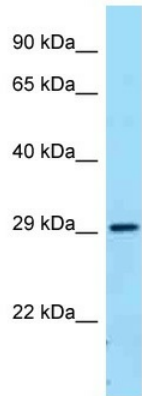
Product Type:	Primary Antibodies
Applications:	WB
Reactivity:	Human
Host:	Rabbit
Clonality:	Polyclonal
Specificity:	Expected reactivity: Human Homology: Human: 100%
Formulation:	Liquid. Purified antibody supplied in 1x PBS buffer with 0.09% (w/v) sodium azide and 2% sucrose. <i>Note that this product is shipped as lyophilized powder to China customers.</i>
Concentration:	lot specific
Purification:	Affinity Purified
Conjugation:	Unconjugated
Storage:	For short term use, store at 2-8°C up to 1 week. For long term storage, store at -20°C in small aliquots to prevent freeze-thaw cycles.
Stability:	Shelf life: one year from despatch.
Predicted Protein Size:	32kDa
Gene Name:	Fc fragment of IgG receptor IIb
Database Link:	NP_001002273 Entrez Gene 2213 Human P31994
Background:	The protein encoded by this gene is a low affinity receptor for the Fc region of immunoglobulin gamma complexes. The encoded protein is involved in the phagocytosis of immune complexes and in the regulation of antibody production by B-cells. Variations in this gene may increase susceptibility to systemic lupus erythematosus (SLE). Several transcript variants encoding different isoforms have been found for this gene.
Synonyms:	CD32; CD32B; CDw32; Fc-gamma-RIIb; FCG2; FCGR2; FcRII-b; IGFR2
Protein Families:	ES Cell Differentiation/IPS, Transmembrane



[View online »](#)

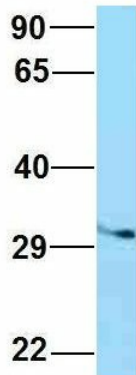
Protein Pathways: B cell receptor signaling pathway, Fc gamma R-mediated phagocytosis, Systemic lupus erythematosus

Product images:



WB Suggested Anti-FCGR2B Antibody
Titration: 1.0 ug/ml
Positive Control: Fetal Lung

FCGR2B



Rabbit Anti-FCGR2B
Sample Type: Human 721_B
Antibody Concentration: 1ug/mL

Host: Rabbit
Target Name: FCGR2B
Sample Type: 721_B
Antibody Dilution: 1.0ug/ml
FCGR2B is supported by BioGPS gene expression data to be expressed in 721_B