

Product datasheet for **TA358457**

SPRR1A Rabbit Polyclonal Antibody

Product data:

Product Type:	Primary Antibodies
Applications:	WB
Reactivity:	Human
Host:	Rabbit
Clonality:	Polyclonal
Specificity:	Expected reactivity: Cow, Horse, Human, Mouse, Pig, Rabbit, Rat Homology: Cow: 85%; Horse: 100%; Human: 100%; Mouse: 86%; Pig: 92%; Rabbit: 93%; Rat: 86%
Formulation:	Liquid. Purified antibody supplied in 1x PBS buffer with 0.09% (w/v) sodium azide and 2% sucrose.
Concentration:	lot specific
Purification:	Affinity Purified
Conjugation:	Unconjugated
Storage:	For short term use, store at 2-8°C up to 1 week. For long term storage, store at -20°C in small aliquots to prevent freeze-thaw cycles.
Stability:	Shelf life: one year from despatch.
Predicted Protein Size:	10kDa
Gene Name:	small proline rich protein 1A
Database Link:	NP_005978 Entrez Gene 6698 Human P35321
Background:	SPRR1A is a cross-linked envelope protein of keratinocytes. It is a keratinocyte protein that first appears in the cell cytosol, but ultimately becomes cross-linked to membrane proteins by transglutaminase. All that results in the formation of an insoluble envelope beneath the plasma membrane.
Synonyms:	OTTHUMP00000016121; SPR-IA; SPRK

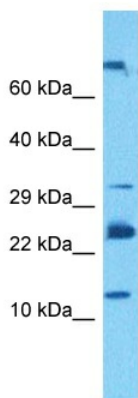


[View online »](#)

Product images:



WB Suggested Anti-SPRR1A Antibody
 Titration: 1.0 ug/ml
 Positive Control: HT1080 Whole Cell



Host: Rabbit
 Target Name: SPRR1A
 Sample Type: MCF7 Cell Lysate
 Antibody Dilution: 1.0ug/ml

Host: Rabbit
 Target Name: SPRR1A
 Sample Tissue: Human MCF7 Whole Cell
 Antibody Dilution: 0.5ug/ml