

Product datasheet for **TA358456**

Reg1 Rabbit Polyclonal Antibody

Product data:

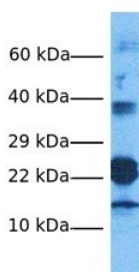
Product Type:	Primary Antibodies
Applications:	WB
Reactivity:	Human, Mouse
Host:	Rabbit
Clonality:	Polyclonal
Specificity:	Expected reactivity: Human, Mouse, Rabbit, Rat Homology: Human: 100%; Mouse: 93%; Rabbit: 86%; Rat: 93%
Formulation:	Liquid. Purified antibody supplied in 1x PBS buffer with 0.09% (w/v) sodium azide and 2% sucrose.
Concentration:	lot specific
Purification:	Affinity Purified
Conjugation:	Unconjugated
Storage:	For short term use, store at 2-8°C up to 1 week. For long term storage, store at -20°C in small aliquots to prevent freeze-thaw cycles.
Stability:	Shelf life: one year from despatch.
Predicted Protein Size:	18kDa
Gene Name:	regenerating islet-derived 1
Database Link:	NP_033068 Entrez Gene 19692 Mouse Q3TV26
Background:	The function of this protein remains unknown.
Synonyms:	Reg1



[View online »](#)

Product images:

Reg1



Host: Rabbit
Target Name: Reg1
Sample Type: Human Fetal
Kidney
Antibody Dilution: 1ug/ml

Host: Rabbit
Target Name: Reg1
Sample Tissue: Human Fetal Kidney
Antibody Dilution: 1.0ug/ml