

Product datasheet for **TA358453**

SLC19A2 Rabbit Polyclonal Antibody

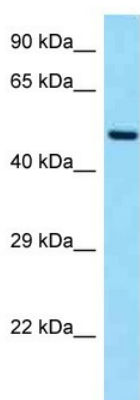
Product data:

Product Type:	Primary Antibodies
Applications:	WB
Reactivity:	Human
Host:	Rabbit
Clonality:	Polyclonal
Specificity:	Expected reactivity: Guinea Pig, Horse, Human, Rabbit, Rat Homology: Guinea Pig: 79%; Horse: 86%; Human: 100%; Rabbit: 79%; Rat: 86%
Formulation:	Liquid. Purified antibody supplied in 1x PBS buffer with 0.09% (w/v) sodium azide and 2% sucrose.
Concentration:	lot specific
Purification:	Affinity Purified
Conjugation:	Unconjugated
Storage:	For short term use, store at 2-8°C up to 1 week. For long term storage, store at -20°C in small aliquots to prevent freeze-thaw cycles.
Stability:	Shelf life: one year from despatch.
Predicted Protein Size:	55kDa
Gene Name:	solute carrier family 19 member 2
Database Link:	NP_008927 Entrez Gene 10560 Human O60779
Background:	This gene encodes the thiamin transporter protein. Mutations in this gene cause thiamin-responsive megaloblastic anemia syndrome (TRMA), which is an autosomal recessive disorder characterized by diabetes mellitus, megaloblastic anemia and sensorineural deafness.
Synonyms:	TC1; THT1; ThTr-1; THTR1; TRMA
Protein Families:	Druggable Genome, Transmembrane



[View online »](#)

Product images:



WB Suggested Anti-SLC19A2 Antibody
Titration: 1.0 ug/ml
Positive Control: Fetal Heart