

## Product datasheet for **TA358448**

### IL15ra Rabbit Polyclonal Antibody

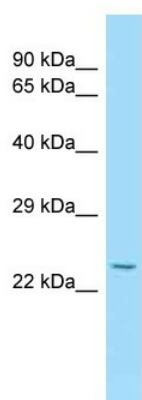
#### Product data:

Product Type:	Primary Antibodies
Applications:	WB
Reactivity:	Mouse
Host:	Rabbit
Clonality:	Polyclonal
Specificity:	<b>Expected reactivity:</b> Cow, Dog, Guinea Pig, Horse, Human, Mouse, Rabbit, Rat <b>Homology:</b> Cow: 100%; Dog: 100%; Guinea Pig: 100%; Horse: 100%; Human: 100%; Mouse: 92%; Rabbit: 100%; Rat: 100%
Formulation:	Liquid. Purified antibody supplied in 1x PBS buffer with 0.09% (w/v) sodium azide and 2% sucrose. <i>Note that this product is shipped as lyophilized powder to China customers.</i>
Concentration:	lot specific
Purification:	Affinity Purified
Conjugation:	Unconjugated
Storage:	For short term use, store at 2-8°C up to 1 week. For long term storage, store at -20°C in small aliquots to prevent freeze-thaw cycles.
Stability:	Shelf life: one year from despatch.
Predicted Protein Size:	25kDa
Gene Name:	interleukin 15 receptor, alpha chain
Database Link:	<a href="#">NP_032384</a> <a href="#">Entrez Gene 16169 Mouse</a> <a href="#">Q60819</a>
Background:	IL15ra is a high-affinity receptor for interleukin-15. Can signal both in cis and trans where IL15R from one subset of cells presents IL15 to neighboring IL2RG-expressing cells. Signal transduction seems to involve STAT3, STAT5, STAT6, JAK2 and SYK. Expression of different isoforms may alter or interfere with signal transduction.
Synonyms:	IL-15R-alpha; IL-15RA; MGC104179



[View online »](#)

## Product images:



WB Suggested Anti-II15ra Antibody  
Titration: 1.0 ug/ml  
Positive Control: Mouse Liver