

Product datasheet for **TA358438**

VILL Rabbit Polyclonal Antibody

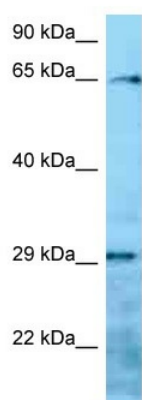
Product data:

Product Type:	Primary Antibodies
Applications:	WB
Reactivity:	Human
Host:	Rabbit
Clonality:	Polyclonal
Specificity:	Expected reactivity: Cow, Dog, Guinea Pig, Horse, Human, Mouse, Rat, Zebrafish Homology: Cow: 86%; Dog: 86%; Guinea Pig: 86%; Horse: 86%; Human: 100%; Mouse: 92%; Rat: 93%; Zebrafish: 92%
Formulation:	Liquid. Purified antibody supplied in 1x PBS buffer with 0.09% (w/v) sodium azide and 2% sucrose. <i>Note that this product is shipped as lyophilized powder to China customers.</i>
Concentration:	lot specific
Purification:	Affinity Purified
Conjugation:	Unconjugated
Storage:	For short term use, store at 2-8°C up to 1 week. For long term storage, store at -20°C in small aliquots to prevent freeze-thaw cycles.
Stability:	Shelf life: one year from despatch.
Predicted Protein Size:	75kDa
Gene Name:	villin-like
Database Link:	NP_056957 Entrez Gene 50853 Human O15195
Background:	The protein encoded by this gene belongs to the villin/gelsolin family. It contains 6 gelsolin-like repeats and a headpiece domain. It may play a role in actin-bundling.
Synonyms:	OTTHUMP00000161384; villin-like



[View online »](#)

Product images:



WB Suggested Anti-VILL Antibody
Titration: 1.0 ug/ml
Positive Control: RPMI-8226 Whole Cell