

Product datasheet for **TA358435**

SDHC Rabbit Polyclonal Antibody

Product data:

Product Type:	Primary Antibodies
Applications:	WB
Reactivity:	Human
Host:	Rabbit
Clonality:	Polyclonal
Specificity:	Expected reactivity: Human Homology: Human: 100%
Formulation:	Liquid. Purified antibody supplied in 1x PBS buffer with 0.09% (w/v) sodium azide and 2% sucrose. <i>Note that this product is shipped as lyophilized powder to China customers.</i>
Concentration:	lot specific
Purification:	Affinity Purified
Conjugation:	Unconjugated
Storage:	For short term use, store at 2-8°C up to 1 week. For long term storage, store at -20°C in small aliquots to prevent freeze-thaw cycles.
Stability:	Shelf life: one year from despatch.
Predicted Protein Size:	17kDa
Gene Name:	succinate dehydrogenase complex subunit C
Database Link:	NP_001030588 Entrez Gene 6391 Human Q99643-2
Background:	This gene encodes one of four nuclear-encoded subunits that comprise succinate dehydrogenase, also known as mitochondrial complex II, a key enzyme complex of the tricarboxylic acid cycle and aerobic respiratory chains of mitochondria. The encoded protein is one of two integral membrane proteins that anchor other subunits of the complex, which form the catalytic core, to the inner mitochondrial membrane. Several related pseudogenes are located in different genomic regions. Mutations in this gene have been associated with paragangliomas. Alternatively spliced transcript variants encoding different isoforms have been described.



[View online »](#)

Synonyms: CYB560; CYBL; PGL3; QPs-1; QPs1; SDH3

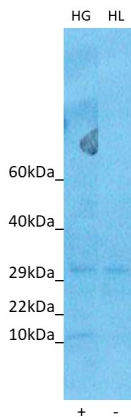
Protein Families: Druggable Genome, Transmembrane

Protein Pathways: Alzheimer's disease, Citrate cycle (TCA cycle), Huntington's disease, Metabolic pathways, Oxidative phosphorylation, Parkinson's disease

Product images:



WB Suggested Anti-SDHC Antibody
Titration: 1.0 ug/ml
Positive Control: THP-1 Whole Cell



Host: Rabbit
Target Name: SDHC
Positive Control: ~25ug HepG2 Cell Lysate (HG)
Negative Control: ~25ug HeLa Cell Lysate (HL)
Antibody Concentration: 5ug/ml

Host: Rabbit
Target: SDHC
Positive control (+): HepG2 Cell Lysate (HG)
Negative control (-): HeLa Cell Lysate (HL)
Antibody concentration: 5ug/ml