

Product datasheet for **TA358433**

SDHC Rabbit Polyclonal Antibody

Product data:

Product Type:	Primary Antibodies
Applications:	IHC, WB
Reactivity:	Human
Host:	Rabbit
Clonality:	Polyclonal
Immunogen:	The immunogen is a synthetic peptide directed towards the N-terminal region of Human SDHC
Specificity:	Expected reactivity: Human
Formulation:	Liquid. Purified antibody supplied in 1x PBS buffer with 0.09% (w/v) sodium azide and 2% sucrose. <i>Note that this product is shipped as lyophilized powder to China customers.</i>
Concentration:	lot specific
Purification:	Affinity Purified
Conjugation:	Unconjugated
Storage:	For short term use, store at 2-8°C up to 1 week. For long term storage, store at -20°C in small aliquots to prevent freeze-thaw cycles.
Stability:	Shelf life: one year from despatch.
Predicted Protein Size:	16kDa
Gene Name:	succinate dehydrogenase complex subunit C
Database Link:	Entrez Gene 6391 Human Q99643-2



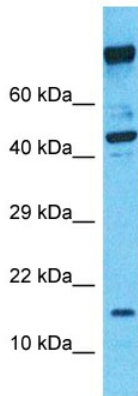
[View online »](#)

Background:

This gene encodes one of four nuclear-encoded subunits that comprise succinate dehydrogenase, also known as mitochondrial complex II, a key enzyme complex of the tricarboxylic acid cycle and aerobic respiratory chains of mitochondria. The encoded protein is one of two integral membrane proteins that anchor other subunits of the complex, which form the catalytic core, to the inner mitochondrial membrane. There are several related pseudogenes for this gene on different chromosomes. Mutations in this gene have been associated with paragangliomas. Alternatively spliced transcript variants have been described.

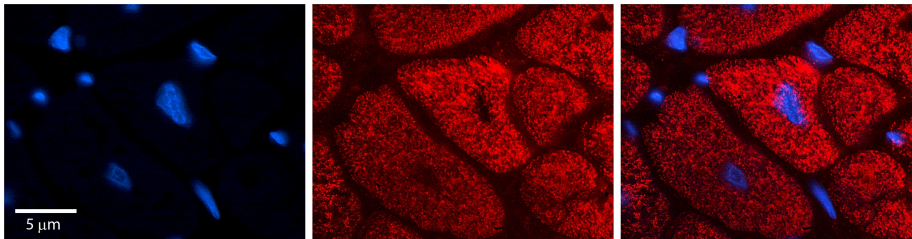
Synonyms:

CYB560; CYBL; PGL3; QPs-1; QPs1; SDH3

Product images:


Host: Rabbit
 Target Name: SDHC
 Sample Tissue: NCI-H226 Cell Lysate
 Antibody Dilution: 1.0µg/ml

Host: Rabbit
 Target Name: SDHC
 Sample Type: NCI-H226 Whole cell lysates
 Antibody Dilution: 1.0ug/ml



Rabbit Anti-SDHC Antibody
 Catalog Number: TA358433
 Formalin Fixed Paraffin Embedded Tissue:
 Human heart Tissue
 Observed Staining: Cytoplasmic in mitochondria
 Primary Antibody Concentration: 1:100
 Other Working Concentrations: 1:600
 Secondary Antibody: Donkey anti-Rabbit-Cy3
 Secondary Antibody Concentration: 1:200
 Magnification: 20X
 Exposure Time: 0.5–2.0 sec