

Product datasheet for **TA358432**

Folylpolyglutamate synthase (FPGS) Rabbit Polyclonal Antibody

Product data:

Product Type:	Primary Antibodies
Applications:	IHC, WB
Reactivity:	Human
Host:	Rabbit
Clonality:	Polyclonal
Specificity:	Expected reactivity: Human Homology: Human: 100%
Formulation:	Liquid. Purified antibody supplied in 1x PBS buffer with 0.09% (w/v) sodium azide and 2% sucrose. <i>Note that this product is shipped as lyophilized powder to China customers.</i>
Concentration:	lot specific
Purification:	Affinity Purified
Conjugation:	Unconjugated
Storage:	For short term use, store at 2-8°C up to 1 week. For long term storage, store at -20°C in small aliquots to prevent freeze-thaw cycles.
Stability:	Shelf life: one year from despatch.
Predicted Protein Size:	59kDa
Gene Name:	folylpolyglutamate synthase
Database Link:	NP_001018088 Entrez Gene 2356 Human Q5JU19
Background:	This gene encodes the folylpolyglutamate synthetase enzyme. This enzyme has a central role in establishing and maintaining both cytosolic and mitochondrial folylpolyglutamate concentrations and, therefore, is essential for folate homeostasis and the survival of proliferating cells. This enzyme catalyzes the ATP-dependent addition of glutamate moieties to folate and folate derivatives. While several transcript variants may exist for this gene, the full-length natures of only two have been biologically validated to date. These two variants encode distinct isoforms.

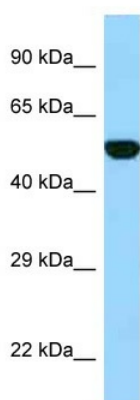


[View online »](#)

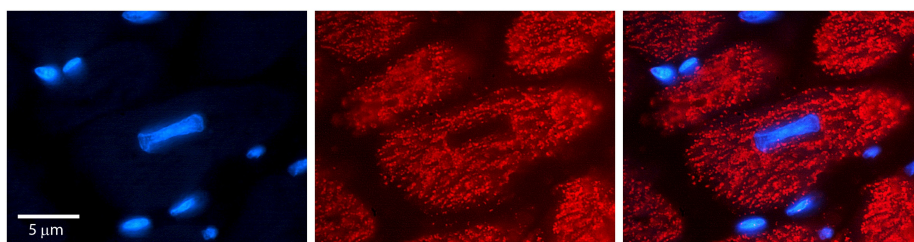
Synonyms: FPGS

Protein Pathways: Folate biosynthesis, Metabolic pathways

Product images:



WB Suggested Anti-FPGS Antibody
Titration: 1.0 ug/ml
Positive Control: Fetal Heart



Rabbit Anti-FPGS Antibody
Catalog Number: TA358432
Formalin Fixed Paraffin Embedded Tissue:
Human heart Tissue
Observed Staining: Cytoplasmic in mitochondria
Primary Antibody Concentration: N/A
Other Working Concentrations: 1:600
Secondary Antibody: Donkey anti-Rabbit-Cy3
Secondary Antibody Concentration: 1:200
Magnification: 20X
Exposure Time: 0.5–2.0 sec