

Product datasheet for **TA358429**

SOCS2 Rabbit Polyclonal Antibody

Product data:

Product Type:	Primary Antibodies
Applications:	WB
Reactivity:	Human, Mouse
Host:	Rabbit
Clonality:	Polyclonal
Specificity:	Expected reactivity: Cow, Dog, Guinea Pig, Human, Mouse, Pig, Rabbit, Rat Homology: Cow: 100%; Dog: 100%; Guinea Pig: 93%; Human: 100%; Mouse: 100%; Pig: 100%; Rabbit: 100%; Rat: 100%
Formulation:	Liquid. Purified antibody supplied in 1x PBS buffer with 0.09% (w/v) sodium azide and 2% sucrose. <i>Note that this product is shipped as lyophilized powder to China customers.</i>
Concentration:	lot specific
Purification:	Affinity Purified
Conjugation:	Unconjugated
Storage:	For short term use, store at 2-8°C up to 1 week. For long term storage, store at -20°C in small aliquots to prevent freeze-thaw cycles.
Stability:	Shelf life: one year from despatch.
Predicted Protein Size:	22kDa
Gene Name:	suppressor of cytokine signaling 2
Database Link:	NP_003868 Entrez Gene 216233 Mouse Entrez Gene 8835 Human O14508



[View online »](#)

Background:

This gene encodes a member of the STAT-induced STAT inhibitor (SSI), also known as suppressor of cytokine signaling (SOCS), family. SSI family members are cytokine-inducible negative regulators of cytokine signaling. The expression of this gene can be induced by a subset of cytokines, including erythropoietin, GM-CSF, IL10 and interferon (IFN)-gamma. The protein encoded by this gene is found to interact with the cytoplasmic domain of insulin-like growth factor-1 receptor (IGF1R), and thus is thought to be involved in the regulation of IGF1R mediated cell signaling. Knockout studies in mice also suggested a regulatory role of this gene in IGF-1 related growth control.

Synonyms:

CIS-2; CIS2; Cish2; SOCS-2; SSI-2; SSI2; STATI2

Protein Families:

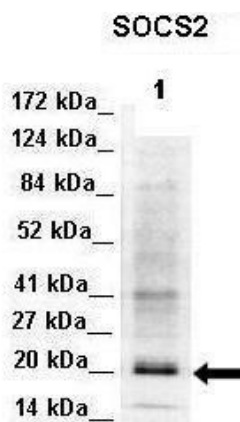
Druggable Genome

Protein Pathways:

Insulin signaling pathway, Jak-STAT signaling pathway, Type II diabetes mellitus

Product images:


WB Suggested Anti-SOCS2 Antibody
Titration: 1.0 ug/ml
Positive Control: U937 Whole Cell



Lanes:
Lane 1: 50ug Mouse adipose lysate
Primary Antibody Dilution:
1:1000
Secondary Antibody:
Donkey anti-Rabbit-HRP
Secondary Antibody Dilution:
1:10000
Gene Name:
SOCS2
Submitted by:
Libin Liu, Boston University.

See Immunoblot 2 Data and Customer Feedback
for more Information