

## Product datasheet for **TA358421**

### Solute carrier family 22 member 5 (SLC22A5) Rabbit Polyclonal Antibody

#### Product data:

Product Type:	Primary Antibodies
Applications:	WB
Reactivity:	Human
Host:	Rabbit
Clonality:	Polyclonal
Specificity:	<b>Expected reactivity:</b> Cow, Dog, Guinea Pig, Horse, Human, Pig, Rabbit, Rat <b>Homology:</b> Cow: 100%; Dog: 85%; Guinea Pig: 92%; Horse: 100%; Human: 100%; Pig: 100%; Rabbit: 92%; Rat: 92%
Formulation:	Liquid. Purified antibody supplied in 1x PBS buffer with 0.09% (w/v) sodium azide and 2% sucrose.
Concentration:	lot specific
Purification:	Affinity Purified
Conjugation:	Unconjugated
Storage:	For short term use, store at 2-8°C up to 1 week. For long term storage, store at -20°C in small aliquots to prevent freeze-thaw cycles.
Stability:	Shelf life: one year from despatch.
Predicted Protein Size:	61kDa
Gene Name:	solute carrier family 22 member 5
Database Link:	<a href="#">NP_003051</a> <a href="#">Entrez Gene 6584 Human</a> <a href="#">O76082</a>



[View online »](#)

**Background:**

Polyspecific organic cation transporters in the liver, kidney, intestine, and other organs are critical for elimination of many endogenous small organic cations as well as a wide array of drugs and environmental toxins. The encoded protein is a plasma integral membrane protein which functions both as an organic cation transporter and as a sodium-dependent high affinity carnitine transporter. The encoded protein is involved in the active cellular uptake of carnitine. Mutations in this gene are the cause of systemic primary carnitine deficiency (CDSP), an autosomal recessive disorder manifested early in life by hypoketotic hypoglycemia and acute metabolic decompensation, and later in life by skeletal myopathy or cardiomyopathy.

**Synonyms:**

CDSP; FLJ46769; OCTN2; OCTN2VT; SCD

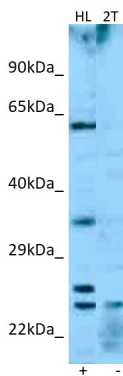
**Protein Families:**

Transmembrane

**Product images:**



WB Suggested Anti-SLC22A5 Antibody  
Titration: 1.0 ug/ml  
Positive Control: OVCAR-3 Whole Cell



Host: Rabbit  
Target Name: SLC22A5  
Positive Control: ~25ug HeLa Cell Lysate (HL)  
Negative Control: ~25ug 293T Cell Lysate (2T)  
Antibody Concentration: 1ug/ml

Host: Rabbit  
Target: SLC22A5  
Positive control (+): HeLa Cell Lysate (HL)  
Negative control (-): 293T Cell Lysate (2T)  
Antibody concentration: 1ug/ml