

## Product datasheet for **TA358419**

### SRMS Rabbit Polyclonal Antibody

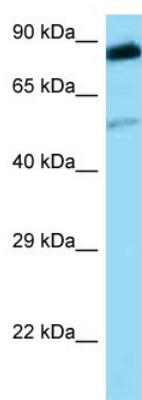
#### Product data:

Product Type:	Primary Antibodies
Applications:	WB
Reactivity:	Human
Host:	Rabbit
Clonality:	Polyclonal
Specificity:	<b>Expected reactivity:</b> Human <b>Homology:</b> Human: 100%
Formulation:	Liquid. Purified antibody supplied in 1x PBS buffer with 0.09% (w/v) sodium azide and 2% sucrose. <i>Note that this product is shipped as lyophilized powder to China customers.</i>
Concentration:	lot specific
Purification:	Affinity Purified
Conjugation:	Unconjugated
Storage:	For short term use, store at 2-8°C up to 1 week. For long term storage, store at -20°C in small aliquots to prevent freeze-thaw cycles.
Stability:	Shelf life: one year from despatch.
Predicted Protein Size:	54kDa
Gene Name:	src-related kinase lacking C-terminal regulatory tyrosine and N-terminal myristylation sites
Database Link:	<a href="#">NP_543013</a> <a href="#">Entrez Gene 6725 Human</a> <a href="#">Q9H3Y6</a>
Background:	SRMS may be involved in proliferation or differentiation of keratinocytes in the skin.
Synonyms:	C20orf148; dj697K14.1; SRM
Protein Families:	Druggable Genome, Protein Kinase



[View online »](#)

## Product images:



WB Suggested Anti-SRMS Antibody  
Titration: 1.0 ug/ml  
Positive Control: PANC1 Whole Cell