

## Product datasheet for **TA358418**

### TCP1 beta (CCT2) Rabbit Polyclonal Antibody

#### Product data:

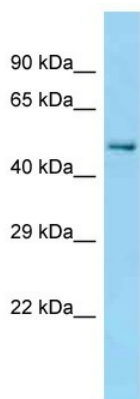
Product Type:	Primary Antibodies
Applications:	IHC, WB
Reactivity:	Human, Mouse
Host:	Rabbit
Clonality:	Polyclonal
Specificity:	<b>Expected reactivity:</b> Cow, Dog, Guinea Pig, Horse, Human, Mouse, Rabbit, Rat, Zebrafish <b>Homology:</b> Cow: 100%; Dog: 100%; Guinea Pig: 100%; Horse: 100%; Human: 100%; Mouse: 85%; Rabbit: 100%; Rat: 100%; Zebrafish: 100%
Formulation:	Liquid. Purified antibody supplied in 1x PBS buffer with 0.09% (w/v) sodium azide and 2% sucrose. <i>Note that this product is shipped as lyophilized powder to China customers.</i>
Concentration:	lot specific
Purification:	Affinity Purified
Conjugation:	Unconjugated
Storage:	For short term use, store at 2-8°C up to 1 week. For long term storage, store at -20°C in small aliquots to prevent freeze-thaw cycles.
Stability:	Shelf life: one year from despatch.
Predicted Protein Size:	53kDa
Gene Name:	chaperonin containing TCP1 subunit 2
Database Link:	<a href="#">NP_001185771</a> <a href="#">Entrez Gene 12461 Mouse</a> <a href="#">Entrez Gene 10576 Human</a> <a href="#">B7ZAT2</a>
Background:	The protein encoded by this gene is a molecular chaperone that is a member of the chaperonin containing TCP1 complex (CCT), also known as the TCP1 ring complex (TRiC). This complex consists of two identical stacked rings, each containing eight different proteins. Unfolded polypeptides enter the central cavity of the complex and are folded in an ATP-dependent manner. The complex folds various proteins, including actin and tubulin.
Synonyms:	99D8.1; CCT-beta; CCTB; MGC142074; MGC142076; PRO1633; TCP-1-beta



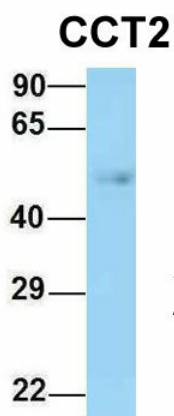
[View online »](#)

Protein Families: Druggable Genome

**Product images:**

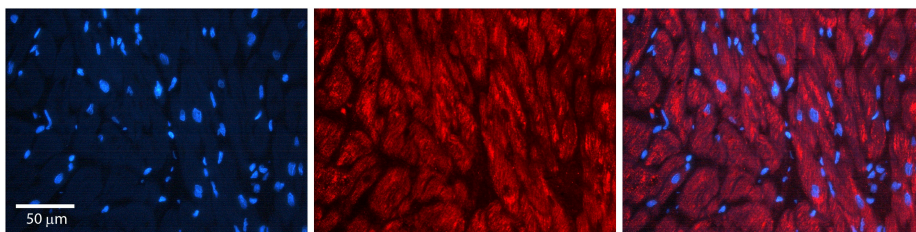


WB Suggested Anti-cct2 antibody  
Titration: 2 ug/ml  
Positive Control: Mouse WT brain



Rabbit Anti-CCT2  
Sample Type: Human Fetal Lung  
Antibody Concentration: 1ug/mL

Host: Rabbit  
Target Name: CCT2  
Sample Type: Human Fetal Lung  
Antibody Dilution: 1.0ug/ml



Rabbit Anti-CCT2 Antibody  
Catalog Number: TA358418  
Formalin Fixed Paraffin Embedded Tissue:  
Human heart Tissue  
Observed Staining: Cytoplasmic  
Primary Antibody Concentration: 1:100  
Other Working Concentrations: N/A  
Secondary Antibody: Donkey anti-Rabbit-Cy3  
Secondary Antibody Concentration: 1:200  
Magnification: 20X  
Exposure Time: 0.5-2.0 sec