

Product datasheet for **TA358412**

HLA DMB (HLA-DMB) Rabbit Polyclonal Antibody

Product data:

Product Type:	Primary Antibodies
Applications:	IHC, WB
Reactivity:	Human
Host:	Rabbit
Clonality:	Polyclonal
Specificity:	Expected reactivity: Human, Rat Homology: Human: 100%; Rat: 86%
Formulation:	Liquid. Purified antibody supplied in 1x PBS buffer with 0.09% (w/v) sodium azide and 2% sucrose. <i>Note that this product is shipped as lyophilized powder to China customers.</i>
Concentration:	lot specific
Purification:	Affinity Purified
Conjugation:	Unconjugated
Storage:	For short term use, store at 2-8°C up to 1 week. For long term storage, store at -20°C in small aliquots to prevent freeze-thaw cycles.
Stability:	Shelf life: one year from despatch.
Predicted Protein Size:	29kDa
Gene Name:	major histocompatibility complex, class II, DM beta
Database Link:	NP_002109 Entrez Gene 3109 Human P28068



[View online »](#)

Background:

HLA-DMB belongs to the HLA class II beta chain paralogues. This class II molecule is a heterodimer consisting of an alpha (DMA) and a beta (DMB) chain, both anchored in the membrane. It is located in intracellular vesicles. DM plays a central role in the peptide loading of MHC class II molecules by helping to release the CLIP (class II-associated invariant chain peptide) molecule from the peptide binding site. Class II molecules are expressed in antigen presenting cells (APC: B lymphocytes, dendritic cells, macrophages). The beta chain is approximately 26-28 kDa and its gene contains 6 exons. Exon one encodes the leader peptide, exons 2 and 3 encode the two extracellular domains, exon 4 encodes the transmembrane domain and exon 5 encodes the cytoplasmic tail.

Synonyms:

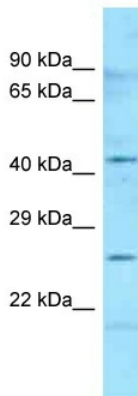
D6S221E; RING7

Protein Families:

Transmembrane

Protein Pathways:

Allograft rejection, Antigen processing and presentation, Asthma, Autoimmune thyroid disease, Cell adhesion molecules (CAMs), Graft-versus-host disease, Systemic lupus erythematosus, Type I diabetes mellitus, Viral myocarditis

Product images:


Rabbit Anti-HLA-DMB Antibody

Lot Number: QC34380

Lane: Placenta Lysate

Antibody Titration: 1.0µg/ml

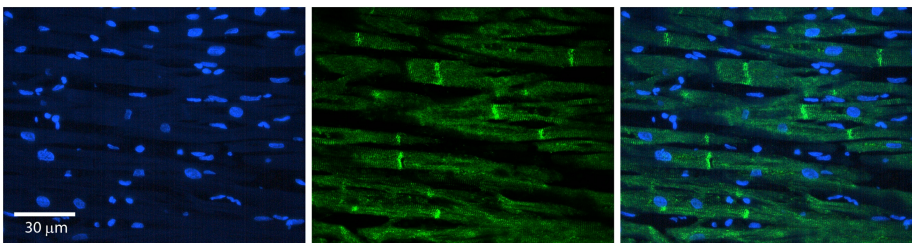
Gel Concentration: 12%

Host: Rabbit

Target Name: HLA-DMB

Sample Type: Human Placenta

Antibody Dilution: 1.0ug/ml



Rabbit Anti-HLA-DMB Antibody

Catalog Number: TA358412

Formalin Fixed Paraffin Embedded Tissue:

Human heart Tissue

Observed Staining: Plasma membrane in intercalated disk

Primary Antibody Concentration: 1:100

Other Working Concentrations: N/A

Secondary Antibody: Donkey anti-Rabbit-Cy3

Secondary Antibody Concentration: 1:200

Magnification: 20X

Exposure Time: 0.5–2.0 sec