

Product datasheet for **TA358407**

Glucose Transporter GLUT3 (SLC2A3) Rabbit Polyclonal Antibody

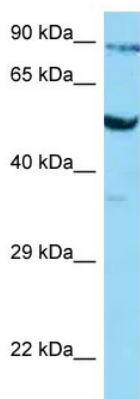
Product data:

Product Type:	Primary Antibodies
Applications:	WB
Reactivity:	Human
Host:	Rabbit
Clonality:	Polyclonal
Specificity:	Expected reactivity: Cow, Dog, Goat, Guinea Pig, Horse, Human, Pig, Rabbit, Rat, Sheep Homology: Cow: 86%; Dog: 93%; Goat: 86%; Guinea Pig: 79%; Horse: 79%; Human: 100%; Pig: 93%; Rabbit: 79%; Rat: 85%; Sheep: 86%
Formulation:	Liquid. Purified antibody supplied in 1x PBS buffer with 0.09% (w/v) sodium azide and 2% sucrose. <i>Note that this product is shipped as lyophilized powder to China customers.</i>
Concentration:	lot specific
Purification:	Affinity Purified
Conjugation:	Unconjugated
Storage:	For short term use, store at 2-8°C up to 1 week. For long term storage, store at -20°C in small aliquots to prevent freeze-thaw cycles.
Stability:	Shelf life: one year from despatch.
Predicted Protein Size:	55kDa
Gene Name:	solute carrier family 2 member 3
Database Link:	NP_008862 Entrez Gene 6515 Human P11169
Background:	SLC2A3 is a facilitative glucose transporter. It is a probably a neuronal glucose transporter.
Synonyms:	FLJ90380; GLUT-3; GLUT3
Protein Families:	Transmembrane

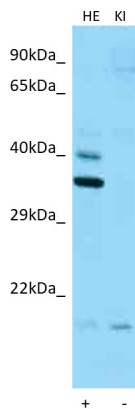


[View online »](#)

Product images:



WB Suggested Anti-SLC2A3 Antibody Titration: 1 ug/ml
 Positive Control: COLO205 cells lysate



Host: Rabbit
 Target name: SLC2A3
 Positive control: ~25ug Human Fetal Heart (HE)
 Negative control: ~25ug Human Kidney (KI)
 Antibody concentration: 1ug/ml

Host: Rabbit
 Target: SLC2A3
 Positive control (+): Human heart (HE)
 Negative control (-): Human kidney (KI)
 Antibody concentration: 1ug/ml