

Product datasheet for **TA358401**

PINK1 Rabbit Polyclonal Antibody

Product data:

Product Type:	Primary Antibodies
Applications:	IHC, WB
Reactivity:	Human
Host:	Rabbit
Clonality:	Polyclonal
Specificity:	Expected reactivity: Cow, Guinea Pig, Horse, Human, Mouse, Rabbit, Rat Homology: Cow: 93%; Guinea Pig: 100%; Horse: 93%; Human: 100%; Mouse: 93%; Rabbit: 100%; Rat: 100%
Formulation:	Liquid. Purified antibody supplied in 1x PBS buffer with 0.09% (w/v) sodium azide and 2% sucrose. <i>Note that this product is shipped as lyophilized powder to China customers.</i>
Concentration:	lot specific
Purification:	Affinity Purified
Conjugation:	Unconjugated
Storage:	For short term use, store at 2-8°C up to 1 week. For long term storage, store at -20°C in small aliquots to prevent freeze-thaw cycles.
Stability:	Shelf life: one year from despatch.
Predicted Protein Size:	63kDa
Gene Name:	PTEN induced putative kinase 1
Database Link:	NP_115785 Entrez Gene 65018 Human Q9BXM7
Background:	This gene encodes a serine/threonine protein kinase that localizes to mitochondria. It is thought to protect cells from stress-induced mitochondrial dysfunction. Mutations in this gene cause one form of autosomal recessive early-onset Parkinson disease.
Synonyms:	BRPK; FLJ27236; PARK6
Protein Families:	Druggable Genome, Protein Kinase
Protein Pathways:	Parkinson's disease

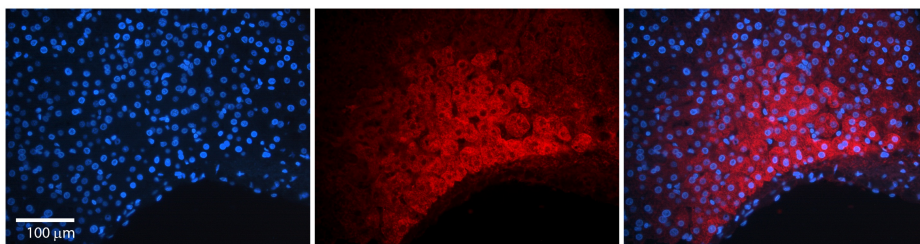


[View online »](#)

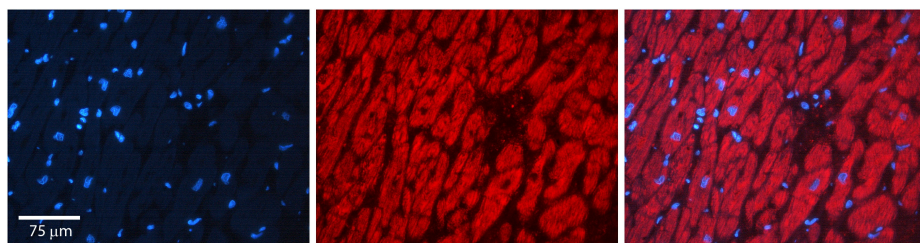
Product images:



WB Suggested Anti-PINK1 Antibody
 Titration: 1.0 ug/ml
 Positive Control: RPMI-8226 Whole Cell



Rabbit Anti-PINK1 Antibody
 Catalog Number: TA358401
 Formalin Fixed Paraffin Embedded Tissue:
 Human Liver Tissue
 Observed Staining: Cytoplasm in hepatocytes
 Primary Antibody Concentration: 1:100
 Other Working Concentrations: N/A
 Secondary Antibody: Donkey anti-Rabbit-Cy3
 Secondary Antibody Concentration: 1:200
 Magnification: 20X
 Exposure Time: 0.5–2.0 sec



Rabbit Anti-PINK1 Antibody
 Catalog Number: TA358401
 Formalin Fixed Paraffin Embedded Tissue:
 Human heart Tissue
 Observed Staining: Cytoplasmic
 Primary Antibody Concentration: N/A
 Other Working Concentrations: 1:600
 Secondary Antibody: Donkey anti-Rabbit-Cy3
 Secondary Antibody Concentration: 1:200
 Magnification: 20X
 Exposure Time: 0.5–2.0 sec