

Product datasheet for **TA358386**

P2Y2 (P2RY2) Rabbit Polyclonal Antibody

Product data:

Product Type:	Primary Antibodies
Applications:	WB
Reactivity:	Human
Host:	Rabbit
Clonality:	Polyclonal
Specificity:	Expected reactivity: Dog, Horse, Human, Mouse, Pig, Rat Homology: Dog: 100%; Horse: 92%; Human: 100%; Mouse: 92%; Pig: 92%; Rat: 92%
Formulation:	Liquid. Purified antibody supplied in 1x PBS buffer with 0.09% (w/v) sodium azide and 2% sucrose. <i>Note that this product is shipped as lyophilized powder to China customers.</i>
Concentration:	lot specific
Purification:	Affinity Purified
Conjugation:	Unconjugated
Storage:	For short term use, store at 2-8°C up to 1 week. For long term storage, store at -20°C in small aliquots to prevent freeze-thaw cycles.
Stability:	Shelf life: one year from despatch.
Predicted Protein Size:	41kDa
Gene Name:	purinergic receptor P2Y2
Database Link:	NP_788085 Entrez Gene 5029 Human P41231
Background:	The product of this gene belongs to the family of G-protein coupled receptors. This family has several receptor subtypes with different pharmacological selectivity, which overlaps in some cases, for various adenosine and uridine nucleotides. This receptor is responsive to both adenosine and uridine nucleotides. It may participate in control of the cell cycle of endometrial carcinoma cells. Three transcript variants encoding the same protein have been identified for this gene.
Synonyms:	HP2U; MGC20088; MGC40010; P2RU1; P2U; P2U1; P2UR; P2Y2; P2Y2R

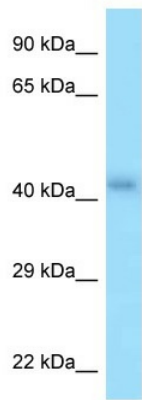


[View online »](#)

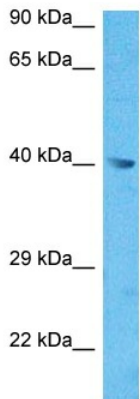
Protein Families: Druggable Genome, GPCR, Transmembrane

Protein Pathways: Neuroactive ligand-receptor interaction

Product images:

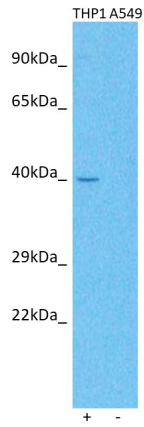


WB Suggested Anti-P2RY2 Antibody
 Titration: 1.0 ug/ml
 Positive Control: 721_B Whole Cell
 P2RY2 is supported by BioGPS gene expression data to be expressed in 721_B



Host: Rabbit
 Target Name: P2RY2
 Sample Type: Jurkat Cell Lysate
 Antibody Dilution: 1.0µg/ml

Host: Rabbit
 Target Name: P2RY2
 Sample Tissue: Human Jurkat Whole Cell
 Antibody Dilution: 3ug/ml



Host: Rabbit
Target name: P2RY2
Positive control: ~25ug THP1 Cell Lysate (THP1)
Negative control: ~25ug A549 Cell lysate (A549)
Antibody concentration: 5ug/ml

Host: Rabbit
Target: P2RY2
Positive control (+): THP-1 (N30)
Negative control (-): A549 (N03)
Antibody concentration: 5ug/ml