

## Product datasheet for **TA358385**

### CD130 (IL6ST) Rabbit Polyclonal Antibody

#### Product data:

Product Type:	Primary Antibodies
Applications:	IHC, WB
Reactivity:	Human
Host:	Rabbit
Clonality:	Polyclonal
Specificity:	<b>Expected reactivity:</b> Cow, Dog, Guinea Pig, Horse, Human, Rabbit, Rat <b>Homology:</b> Cow: 93%; Dog: 93%; Guinea Pig: 86%; Horse: 86%; Human: 100%; Rabbit: 77%; Rat: 86%
Formulation:	Liquid. Purified antibody supplied in 1x PBS buffer with 0.09% (w/v) sodium azide and 2% sucrose. <i>Note that this product is shipped as lyophilized powder to China customers.</i>
Concentration:	lot specific
Purification:	Affinity Purified
Conjugation:	Unconjugated
Storage:	For short term use, store at 2-8°C up to 1 week. For long term storage, store at -20°C in small aliquots to prevent freeze-thaw cycles.
Stability:	Shelf life: one year from despatch.
Predicted Protein Size:	35kDa
Gene Name:	interleukin 6 signal transducer
Database Link:	<a href="#">NP_786943</a> <a href="#">Entrez Gene 3572 Human</a> <a href="#">P40189-2</a>
Background:	The protein encoded by this gene is a signal transducer shared by many cytokines, including interleukin 6 (IL6), ciliary neurotrophic factor (CNTF), leukemia inhibitory factor (LIF), and oncostatin M (OSM). This protein functions as a part of the cytokine receptor complex. The activation of this protein is dependent upon the binding of cytokines to their receptors. vIL6, a protein related to IL6 and encoded by the Kaposi sarcoma-associated herpesvirus, can bypass the interleukin 6 receptor (IL6R) and directly activate this protein. Knockout studies in mice suggest that this gene plays a critical role in regulating myocyte apoptosis.



[View online »](#)

**Synonyms:** CD130; CDw130; GP130; GP130-RAPS; IL-6R-beta; IL6R-beta; OTTHUMP00000122545

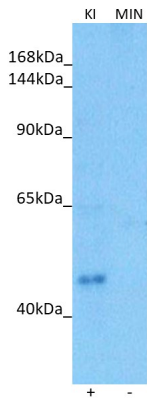
**Protein Families:** Druggable Genome, Secreted Protein, Transmembrane

**Protein Pathways:** Cytokine-cytokine receptor interaction, Jak-STAT signaling pathway

**Product images:**

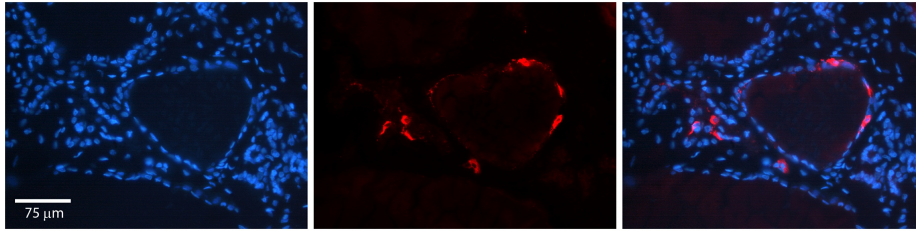


WB Suggested Anti-IL6ST Antibody  
 Titration: 1.0 ug/ml  
 Positive Control: MDA-MB-435S Whole Cell

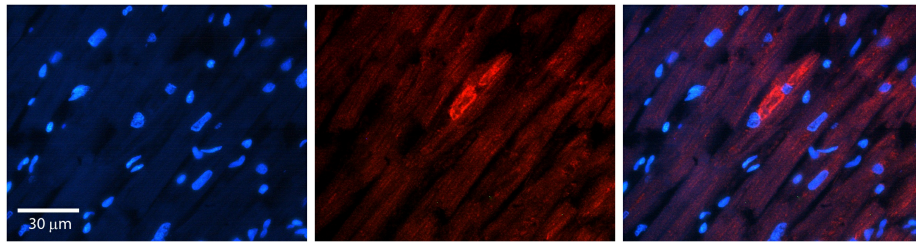


Host: Rabbit  
 Target name: IL6ST  
 Positive control: ~25ug Mouse Kidney (KI)  
 Negative control: ~25ug Mouse Intestine (MIN)  
 Antibody concentration: 1ug/ml

Host: Rabbit  
 Target: IL6ST  
 Positive control (+): Mouse Kidney (M-KI)  
 Negative control (-): Mouse Small Intestine (M-IN)  
 Antibody concentration: 1ug/ml



Rabbit Anti-IL6ST Antibody  
 Catalog Number: TA358385  
 Formalin Fixed Paraffin Embedded Tissue:  
 Human Thyroid Tissue  
 Observed Staining: Plasma membrane and  
 cytoplasm in follicular cells  
 Primary Antibody Concentration: 1:100  
 Other Working Concentrations: 1:600  
 Secondary Antibody: Donkey anti-Rabbit-Cy3  
 Secondary Antibody Concentration: 1:200  
 Magnification: 20X  
 Exposure Time: 0.5–2.0 sec



Rabbit Anti-IL6ST Antibody  
 Catalog Number: TA358385  
 Formalin Fixed Paraffin Embedded Tissue:  
 Human heart Tissue  
 Observed Staining: Plasma membrane  
 Primary Antibody Concentration: 1:100  
 Other Working Concentrations: N/A  
 Secondary Antibody: Donkey anti-Rabbit-Cy3  
 Secondary Antibody Concentration: 1:200  
 Magnification: 20X  
 Exposure Time: 0.5–2.0 sec