

Product datasheet for **TA358380**

GALP Rabbit Polyclonal Antibody

Product data:

Product Type:	Primary Antibodies
Applications:	IHC
Reactivity:	Human
Host:	Rabbit
Clonality:	Polyclonal
Immunogen:	The immunogen is a synthetic peptide directed towards the following sequence VLHLPQMGDQDGKRETALEILDWLKAIIDGLPYSHPPQPSKRNVMETFAKP
Specificity:	Expected reactivity: Human, Pig Homology: Human: 100%; Pig: 93%
Formulation:	Liquid. Purified antibody supplied in 1x PBS buffer with 0.09% (w/v) sodium azide and 2% sucrose.
Concentration:	lot specific
Purification:	Affinity Purified
Conjugation:	Unconjugated
Storage:	For short term use, store at 2-8°C up to 1 week. For long term storage, store at -20°C in small aliquots to prevent freeze-thaw cycles.
Stability:	Shelf life: one year from despatch.
Predicted Protein Size:	13 kDa
Gene Name:	galanin like peptide
Database Link:	NP_001139018 Entrez Gene 85569 Human Q9UBC7
Background:	This gene encodes a member of the galanin family of neuropeptides. The encoded protein binds galanin receptors 1, 2 and 3 with the highest affinity for galanin receptor 3 and has been implicated in biological processes involving the central nervous system including hypothalamic regulation of metabolism and reproduction. A peptide encoded by a splice variant of this gene, termed alarin, may have vasoactive properties and serve as a marker for neuroblastic tumors.

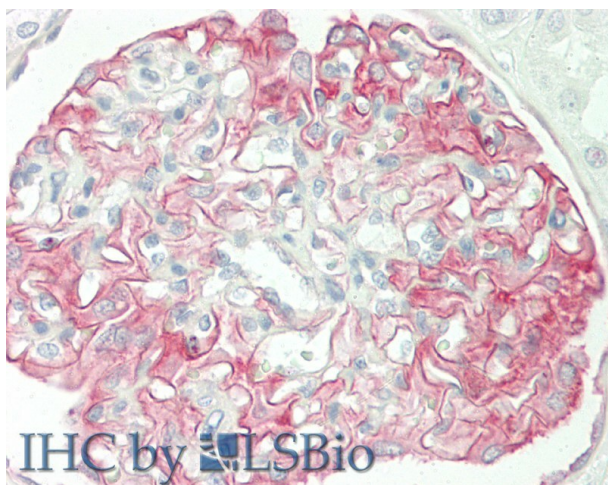


[View online »](#)

Synonyms: alarin

Protein Families: Secreted Protein

Product images:



Rabbit Anti-GALP antibody
Catalog Number: ARP63212
Formalin Fixed Paraffin Embedded Tissue:
Human Kidney
Primary antibody Concentration: 1:100
Secondary Antibody: Donkey anti-Rabbit-Cy3
Secondary Antibody Concentration: 1:200
Magnification: 20x
Exposure Time: 0.5-2.0sec