

## Product datasheet for **TA358369**

### NF2 Rabbit Polyclonal Antibody

#### Product data:

Product Type:	Primary Antibodies
Applications:	WB
Reactivity:	Human
Host:	Rabbit
Clonality:	Polyclonal
Specificity:	<b>Expected reactivity:</b> Cow, Dog, Guinea Pig, Horse, Human, Mouse, Rabbit, Rat, Zebrafish <b>Homology:</b> Cow: 100%; Dog: 100%; Guinea Pig: 100%; Horse: 100%; Human: 100%; Mouse: 100%; Rabbit: 100%; Rat: 100%; Zebrafish: 100%
Formulation:	Liquid. Purified antibody supplied in 1x PBS buffer with 0.09% (w/v) sodium azide and 2% sucrose. <i>Note that this product is shipped as lyophilized powder to China customers.</i>
Concentration:	lot specific
Purification:	Affinity Purified
Conjugation:	Unconjugated
Storage:	For short term use, store at 2-8°C up to 1 week. For long term storage, store at -20°C in small aliquots to prevent freeze-thaw cycles.
Stability:	Shelf life: one year from despatch.
Predicted Protein Size:	56kDa
Gene Name:	neurofibromin 2 (merlin)
Database Link:	<a href="#">NP_861968</a> <a href="#">Entrez Gene 4771 Human P35240-4</a>



[View online »](#)

**Background:**

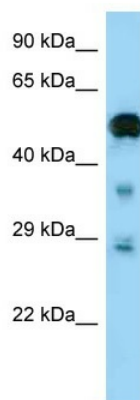
This gene encodes a protein that is similar to some members of the ERM (ezrin, radixin, moesin) family of proteins that are thought to link cytoskeletal components with proteins in the cell membrane. This gene product has been shown to interact with cell-surface proteins, proteins involved in cytoskeletal dynamics and proteins involved in regulating ion transport. This gene is expressed at high levels during embryonic development; in adults, significant expression is found in Schwann cells, meningeal cells, lens and nerve. Mutations in this gene are associated with neurofibromatosis type II which is characterized by nervous system and skin tumors and ocular abnormalities. Two predominant isoforms and a number of minor isoforms are produced by alternatively spliced transcripts.

**Synonyms:**

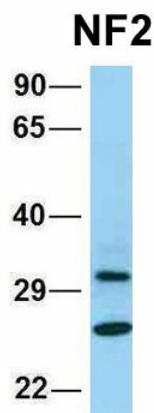
ACN; BANF; merlin; Neurofibromin-2; SCH; schwannomerlin; Schwannomin

**Protein Families:**

Druggable Genome

**Product images:**


WB Suggested Anti-NF2 Antibody  
Titration: 1.0 ug/ml  
Positive Control: Fetal Brain



Rabbit Anti-NF2  
Sample Type: Human Fetal  
Kidney  
Antibody Concentration: 1ug/mL

Host: Rabbit  
Target Name: NF2  
Sample Type: Human Fetal Kidney  
Antibody Dilution: 1.0ug/ml

