

Product datasheet for **TA358368**

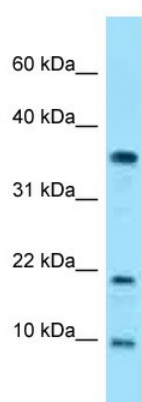
SNRPE Rabbit Polyclonal Antibody

Product data:

Product Type:	Primary Antibodies
Applications:	WB
Reactivity:	Human
Host:	Rabbit
Clonality:	Polyclonal
Specificity:	Expected reactivity: Cow, Dog, Goat, Guinea Pig, Human, Mouse, Rat Homology: Cow: 100%; Dog: 100%; Goat: 100%; Guinea Pig: 100%; Human: 100%; Mouse: 100%; Rat: 100%
Formulation:	Liquid. Purified antibody supplied in 1x PBS buffer with 0.09% (w/v) sodium azide and 2% sucrose. <i>Note that this product is shipped as lyophilized powder to China customers.</i>
Concentration:	lot specific
Purification:	Affinity Purified
Conjugation:	Unconjugated
Storage:	For short term use, store at 2-8°C up to 1 week. For long term storage, store at -20°C in small aliquots to prevent freeze-thaw cycles.
Stability:	Shelf life: one year from despatch.
Predicted Protein Size:	10kDa
Gene Name:	small nuclear ribonucleoprotein polypeptide E
Database Link:	NP_003085 Entrez Gene 6635 Human P62304
Background:	SNRPE appears to function in the U7 snRNP complex that is involved in histone 3'-end processing. Associated with snRNP U1, U2, U4/U6 and U5.
Synonyms:	B-raf; Sm-E; SmE; snRNP-E
Protein Families:	Stem cell - Pluripotency
Protein Pathways:	Spliceosome



[View online »](#)

Product images:

WB Suggested Anti-SNRPE Antibody
Titration: 1.0 ug/ml
Positive Control: Hela Whole Cells
SNRPE is strongly supported by BioGPS gene expression data to be expressed in Human HeLa cells