

Product datasheet for **TA358367**

SPARC Rabbit Polyclonal Antibody

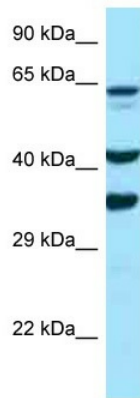
Product data:

Product Type:	Primary Antibodies
Applications:	IHC, WB
Reactivity:	Human, Mouse
Host:	Rabbit
Clonality:	Polyclonal
Specificity:	Expected reactivity: Cow, Dog, Goat, Guinea Pig, Horse, Human, Mouse, Rabbit, Rat, Sheep, Zebrafish Homology: Cow: 93%; Dog: 86%; Goat: 93%; Guinea Pig: 86%; Horse: 86%; Human: 100%; Mouse: 79%; Rabbit: 93%; Rat: 92%; Sheep: 93%; Zebrafish: 77%
Formulation:	Liquid. Purified antibody supplied in 1x PBS buffer with 0.09% (w/v) sodium azide and 2% sucrose.
Concentration:	lot specific
Purification:	Affinity Purified
Conjugation:	Unconjugated
Storage:	For short term use, store at 2-8°C up to 1 week. For long term storage, store at -20°C in small aliquots to prevent freeze-thaw cycles.
Stability:	Shelf life: one year from despatch.
Predicted Protein Size:	35kDa
Gene Name:	secreted protein acidic and cysteine rich
Database Link:	NP_003109 Entrez Gene 20692 Mouse Entrez Gene 6678 Human P09486
Background:	Secreted protein acidic and rich in cysteine/osteonectin/BM40, or SPARC, is a matrix-associated protein that elicits changes in cell shape, inhibits cell-cycle progression, and influences the synthesis of extracellular matrix (ECM).
Synonyms:	BM-40; ON; Osteonectin
Protein Families:	Druggable Genome

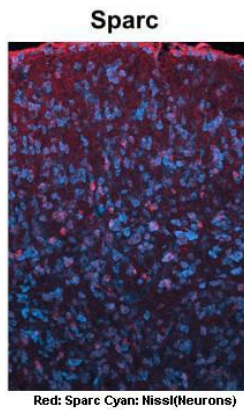


[View online »](#)

Product images:



WB Suggested Anti-SPARC Antibody
 Titration: 1.0 ug/ml
 Positive Control: PANC1 Whole Cell SPARC is strongly supported by BioGPS gene expression data to be expressed in Human PANC1 cells



See IHC 1 Data and Customer Feedback for more Information

Sample Type:
 Adult mouse tectum
 Primary Antibody Dilution:
 1:500
 Secondary Antibody:
 Anti-rabbit-Cy3
 Secondary Antibody Dilution:
 1:1000
 Color/Signal Descriptions:
 Red: Sparc Cyan: Nissl(Neurons)
 Gene Name:
 SPARC
 Submitted by:
 Joshua R. Sanes, Molecular and Cellular Biology,
 Harvard University, 52 Oxford Street, Room 335,
 Cambridge MA 02138, Phone: 617-496-8683, FAX:
 617-495-0524, email: sanesj@mcb.harvard.edu

Rabbit Anti-SPARC Antibody
 Catalog Number: TA358367
 Formalin Fixed Paraffin Embedded Tissue:
 Human Testis Tissue
 Observed Staining: Plasma membrane and cytoplasm in spermatogonia and spermatocytes
 Primary Antibody Concentration: 1:100
 Other Working Concentrations: 1:600
 Secondary Antibody: Donkey anti-Rabbit-Cy3
 Secondary Antibody Concentration: 1:200
 Magnification: 20X
 Exposure Time: 0.5–2.0 sec

