

Product datasheet for **TA358366**

SCARB1 Rabbit Polyclonal Antibody

Product data:

Product Type:	Primary Antibodies
Applications:	IHC, WB
Reactivity:	Human
Host:	Rabbit
Clonality:	Polyclonal
Specificity:	Expected reactivity: Cow, Dog, Guinea Pig, Human, Mouse, Rabbit, Rat Homology: Cow: 79%; Dog: 86%; Guinea Pig: 79%; Human: 100%; Mouse: 86%; Rabbit: 86%; Rat: 79%
Formulation:	Liquid. Purified antibody supplied in 1x PBS buffer with 0.09% (w/v) sodium azide and 2% sucrose. <i>Note that this product is shipped as lyophilized powder to China customers.</i>
Concentration:	lot specific
Purification:	Affinity Purified
Conjugation:	Unconjugated
Storage:	For short term use, store at 2-8°C up to 1 week. For long term storage, store at -20°C in small aliquots to prevent freeze-thaw cycles.
Stability:	Shelf life: one year from despatch.
Predicted Protein Size:	56kDa
Gene Name:	scavenger receptor class B member 1
Database Link:	NP_001076428 Entrez Gene 949 Human F8W8N0
Background:	The protein encoded by this gene is a plasma membrane receptor for high density lipoprotein cholesterol (HDL). The encoded protein mediates cholesterol transfer to and from HDL. In addition, this protein is a receptor for hepatitis C virus glycoprotein E2. Two transcript variants encoding different isoforms have been found for this gene.
Synonyms:	CD36L1; CLA-1; CLA1; MGC138242; SR-BI; SRB1
Protein Families:	Druggable Genome, Transmembrane



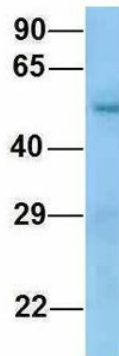
[View online »](#)

Product images:



WB Suggested Anti-SCARB1 Antibody
Titration: 1.0 ug/ml
Positive Control: Fetal kidney

SCARB1



Rabbit Anti-SCARB1
Sample Type: Human Fetal Lung
Antibody Concentration: 1ug/mL

Host: Rabbit
Target Name: SCARB1
Sample Type: Human Fetal Lung
Antibody Dilution: 1.0ug/ml

Rabbit Anti-SCARB1 Antibody
Catalog Number: TA358366
Formalin Fixed Paraffin Embedded Tissue:
Human Liver Tissue
Observed Staining: Plasma membrane and
cytoplasm in hepatocytes
Primary Antibody Concentration: 1:100
Other Working Concentrations: N/A
Secondary Antibody: Donkey anti-Rabbit-Cy3
Secondary Antibody Concentration: 1:200
Magnification: 20X
Exposure Time: 0.5–2.0 sec

