

Product datasheet for **TA358362**

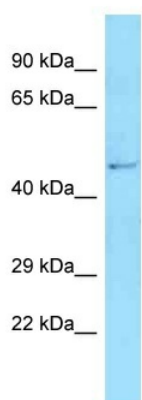
AMDHD2 Rabbit Polyclonal Antibody

Product data:

Product Type:	Primary Antibodies
Applications:	WB
Reactivity:	Human
Host:	Rabbit
Clonality:	Polyclonal
Specificity:	Expected reactivity: Cow, Dog, Guinea Pig, Horse, Human, Mouse, Pig, Rabbit, Rat Homology: Cow: 92%; Dog: 100%; Guinea Pig: 91%; Horse: 92%; Human: 100%; Mouse: 93%; Pig: 92%; Rabbit: 93%; Rat: 93%
Formulation:	Liquid. Purified antibody supplied in 1x PBS buffer with 0.09% (w/v) sodium azide and 2% sucrose. <i>Note that this product is shipped as lyophilized powder to China customers.</i>
Concentration:	lot specific
Purification:	Affinity Purified
Conjugation:	Unconjugated
Storage:	For short term use, store at 2-8°C up to 1 week. For long term storage, store at -20°C in small aliquots to prevent freeze-thaw cycles.
Stability:	Shelf life: one year from despatch.
Predicted Protein Size:	47kDa
Gene Name:	amidohydrolase domain containing 2
Database Link:	NP_057028 Entrez Gene 51005 Human Q9Y303-2
Background:	The function of this protein remains unknown.
Synonyms:	CGI-14
Protein Pathways:	Amino sugar and nucleotide sugar metabolism



[View online »](#)

Product images:

Rabbit Anti-AMDHD2 Antibody

Lot Number: QC34240

Lane: Fetal Kidney Lysate

Antibody Titration: 1.0 μ g/ml

Gel Concentration: 12%

Host: Rabbit

Target Name: AMDHD2

Sample Type: Fetal Kidney

Antibody Dilution: 1.0 μ g/ml