

## Product datasheet for **TA358359**

### ADCK2 Rabbit Polyclonal Antibody

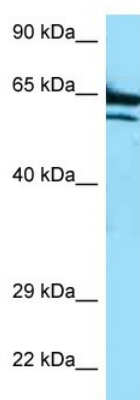
#### Product data:

Product Type:	Primary Antibodies
Applications:	WB
Reactivity:	Human
Host:	Rabbit
Clonality:	Polyclonal
Specificity:	<b>Expected reactivity:</b> Cow, Dog, Guinea Pig, Horse, Human, Mouse, Rabbit, Rat <b>Homology:</b> Cow: 86%; Dog: 93%; Guinea Pig: 93%; Horse: 93%; Human: 100%; Mouse: 77%; Rabbit: 86%; Rat: 93%
Formulation:	Liquid. Purified antibody supplied in 1x PBS buffer with 0.09% (w/v) sodium azide and 2% sucrose. <i>Note that this product is shipped as lyophilized powder to China customers.</i>
Concentration:	lot specific
Purification:	Affinity Purified
Conjugation:	Unconjugated
Storage:	For short term use, store at 2-8°C up to 1 week. For long term storage, store at -20°C in small aliquots to prevent freeze-thaw cycles.
Stability:	Shelf life: one year from despatch.
Predicted Protein Size:	69kDa
Gene Name:	aarF domain containing kinase 2
Database Link:	<a href="#">NP_443085</a> <a href="#">Entrez Gene 90956 Human</a> <a href="#">Q7Z695</a>
Background:	The function of this protein is not yet clear. It is not known if it has protein kinase activity and what type of substrate it would phosphorylate (Ser, Thr or Tyr)
Synonyms:	AARF; MGC20727
Protein Families:	Druggable Genome, Protein Kinase



[View online »](#)

## Product images:



WB Suggested Anti-ADCK2 Antibody  
Titration: 1.0 ug/ml  
Positive Control: HepG2 Whole Cell