

Product datasheet for **TA358358**

AADACL3 Rabbit Polyclonal Antibody

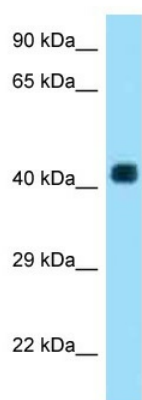
Product data:

Product Type:	Primary Antibodies
Applications:	WB
Reactivity:	Human
Host:	Rabbit
Clonality:	Polyclonal
Specificity:	Expected reactivity: Human Homology: Human: 100%
Formulation:	Liquid. Purified antibody supplied in 1x PBS buffer with 0.09% (w/v) sodium azide and 2% sucrose.
Concentration:	lot specific
Purification:	Affinity Purified
Conjugation:	Unconjugated
Storage:	For short term use, store at 2-8°C up to 1 week. For long term storage, store at -20°C in small aliquots to prevent freeze-thaw cycles.
Stability:	Shelf life: one year from despatch.
Predicted Protein Size:	40kDa
Gene Name:	arylacetamide deacetylase like 3
Database Link:	NP_001096640 Entrez Gene 126767 Human Q5VUY0
Background:	The function of this protein remains unknown.
Synonyms:	OTTHUMG00000001887



[View online »](#)

Product images:



WB Suggested Anti-AADACL3 Antibody
Titration: 1.0 ug/ml
Positive Control: Hela Whole Cell