

Product datasheet for **TA358354**

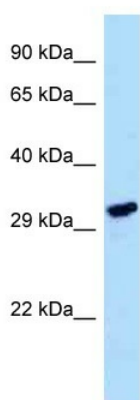
LDHAL6A Rabbit Polyclonal Antibody

Product data:

Product Type:	Primary Antibodies
Applications:	WB
Reactivity:	Human
Host:	Rabbit
Clonality:	Polyclonal
Specificity:	Expected reactivity: Cow, Human, Pig, Rabbit, Rat, Zebrafish Homology: Cow: 92%; Human: 100%; Pig: 92%; Rabbit: 77%; Rat: 77%; Zebrafish: 85%
Formulation:	Liquid. Purified antibody supplied in 1x PBS buffer with 0.09% (w/v) sodium azide and 2% sucrose. <i>Note that this product is shipped as lyophilized powder to China customers.</i>
Concentration:	lot specific
Purification:	Affinity Purified
Conjugation:	Unconjugated
Storage:	For short term use, store at 2-8°C up to 1 week. For long term storage, store at -20°C in small aliquots to prevent freeze-thaw cycles.
Stability:	Shelf life: one year from despatch.
Predicted Protein Size:	37kDa
Gene Name:	lactate dehydrogenase A like 6A
Database Link:	NP_659409 Entrez Gene 160287 Human Q6ZMR3
Background:	LDHAL6A displays an lactate dehydrogenase activity. It significantly increases the transcriptional activity of JUN, when overexpressed.
Synonyms:	LDH6A; LDHL2; MGC23940
Protein Pathways:	Cysteine and methionine metabolism, Glycolysis / Gluconeogenesis, Metabolic pathways, Propanoate metabolism, Pyruvate metabolism



[View online »](#)

Product images:

WB Suggested Anti-LDHAL6A Antibody
Titration: 1.0 ug/ml
Positive Control: HepG2 Whole Cell