

## Product datasheet for **TA358345**

### CD1 (CD1D) Rabbit Polyclonal Antibody

#### Product data:

|                         |   |
|-------------------------|---|
| Product Type:           | Primary Antibodies  |
| Applications:           | WB  |
| Reactivity:             | Human   |
| Host:                   | Rabbit  |
| Clonality:              | Polyclonal  |
| Specificity:            | <b>Expected reactivity:</b> Human<br><b>Homology:</b> Human: 100%   |
| Formulation:            | Liquid. Purified antibody supplied in 1x PBS buffer with 0.09% (w/v) sodium azide and 2% sucrose.<br><i>Note that this product is shipped as lyophilized powder to China customers.</i>   |
| Concentration:          | lot specific  |
| Purification:           | Affinity Purified   |
| Conjugation:            | Unconjugated  |
| Storage:                | For short term use, store at 2-8°C up to 1 week. For long term storage, store at -20°C in small aliquots to prevent freeze-thaw cycles.   |
| Stability:              | Shelf life: one year from despatch.   |
| Predicted Protein Size: | 38kDa   |
| Gene Name:              | CD1d molecule   |
| Database Link:          | <a href="#">NP_001757</a><br><a href="#">Entrez Gene 912 Human P15813</a>   |
| Background:             | This gene encodes a divergent member of the CD1 family of transmembrane glycoproteins, which are structurally related to the major histocompatibility complex (MHC) proteins and form heterodimers with beta-2-microglobulin. The CD1 proteins mediate the presentation of primarily lipid and glycolipid antigens of self or microbial origin to T cells. The human genome contains five CD1 family genes organized in a cluster on chromosome 1. The CD1 family members are thought to differ in their cellular localization and specificity for particular lipid ligands. The protein encoded by this gene localizes to late endosomes and lysosomes via a tyrosine-based motif in the cytoplasmic tail. |



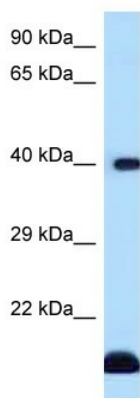
[View online »](#)

**Synonyms:** CD1A; MGC34622; R3; R3G1

**Protein Families:** Druggable Genome, Transmembrane

**Protein Pathways:** Hematopoietic cell lineage

### Product images:



WB Suggested Anti-CD1D Antibody  
Titration: 1.0 ug/ml  
Positive Control: Fetal Heart