

Product datasheet for **TA358344**

STAM1 (STAM) Rabbit Polyclonal Antibody

Product data:

Product Type:	Primary Antibodies
Applications:	WB
Reactivity:	Human, Mouse
Host:	Rabbit
Clonality:	Polyclonal
Specificity:	Expected reactivity: Cow, Dog, Guinea Pig, Horse, Human, Mouse, Rabbit, Rat, Zebrafish Homology: Cow: 100%; Dog: 100%; Guinea Pig: 100%; Horse: 100%; Human: 100%; Mouse: 100%; Rabbit: 100%; Rat: 100%; Zebrafish: 82%
Formulation:	Liquid. Purified antibody supplied in 1x PBS buffer with 0.09% (w/v) sodium azide and 2% sucrose. <i>Note that this product is shipped as lyophilized powder to China customers.</i>
Concentration:	lot specific
Purification:	Affinity Purified
Conjugation:	Unconjugated
Storage:	For short term use, store at 2-8°C up to 1 week. For long term storage, store at -20°C in small aliquots to prevent freeze-thaw cycles.
Stability:	Shelf life: one year from despatch.
Predicted Protein Size:	59kDa
Gene Name:	signal transducing adaptor molecule
Database Link:	NP_003464 Entrez Gene 20844 Mouse Entrez Gene 8027 Human Q92783
Background:	This gene encodes a member of the signal-transducing adaptor molecule family. These proteins mediate downstream signaling of cytokine receptors and also play a role in ER to Golgi trafficking by interacting with the coat protein II complex. The encoded protein also associates with hepatocyte growth factor-regulated substrate to form the endosomal sorting complex required for transport-0 (ESCRT-0), which sorts ubiquitinated membrane proteins to the ESCRT-1 complex for lysosomal degradation. Alternatively spliced transcript variants have been observed for this gene.



[View online »](#)

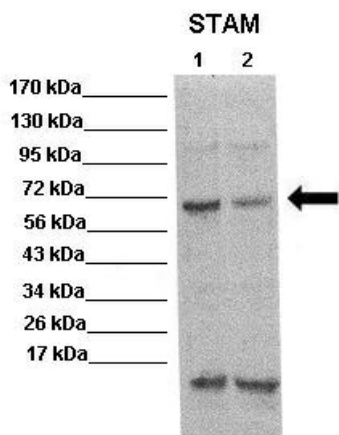
Synonyms: DKFZp686J2352; STAM-1; STAM1

Protein Pathways: Endocytosis, Jak-STAT signaling pathway

Product images:



WB Suggested Anti-STAM Antibody
 Titration: 1.0 ug/ml
 Positive Control: HeLa Whole Cell
 STAM is supported by BioGPS gene expression data to be expressed in HeLa



WB Suggested Anti-STAM Antibody
 Positive Control: Lane 1: 20ug mouse brain extract
 Lane 2: 20ug mouse brain extract
 Primary Antibody Dilution : 1:500
 Secondary Antibody : Anti rabbit-HRP
 Secondary Antibody Dilution : 1:5,000
 Submitted by: Scott Wilson, University of Alabama at Birmingham