

Product datasheet for **TA358343**

Emerin (EMD) Rabbit Polyclonal Antibody

Product data:

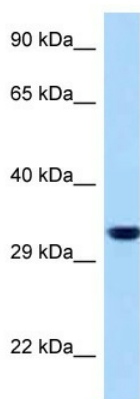
Product Type:	Primary Antibodies
Applications:	WB
Reactivity:	Human
Host:	Rabbit
Clonality:	Polyclonal
Specificity:	Expected reactivity: Cow, Dog, Guinea Pig, Horse, Human, Mouse, Rabbit, Rat Homology: Cow: 92%; Dog: 92%; Guinea Pig: 100%; Horse: 92%; Human: 100%; Mouse: 92%; Rabbit: 83%; Rat: 100%
Formulation:	Liquid. Purified antibody supplied in 1x PBS buffer with 0.09% (w/v) sodium azide and 2% sucrose. <i>Note that this product is shipped as lyophilized powder to China customers.</i>
Concentration:	lot specific
Purification:	Affinity Purified
Conjugation:	Unconjugated
Storage:	For short term use, store at 2-8°C up to 1 week. For long term storage, store at -20°C in small aliquots to prevent freeze-thaw cycles.
Stability:	Shelf life: one year from despatch.
Predicted Protein Size:	28kDa
Gene Name:	emerin
Database Link:	NP_000108 Entrez Gene 2010 Human P50402
Background:	Emerin is a serine-rich nuclear membrane protein and a member of the nuclear lamina-associated protein family. It mediates membrane anchorage to the cytoskeleton. Dreifuss-Emery muscular dystrophy is an X-linked inherited degenerative myopathy resulting from mutation in the emerin gene.
Synonyms:	EDMD; emerin; LEMD5; STA
Protein Families:	Druggable Genome, Transmembrane



[View online »](#)

Protein Pathways: Arrhythmogenic right ventricular cardiomyopathy (ARVC), Dilated cardiomyopathy, Hypertrophic cardiomyopathy (HCM)

Product images:



WB Suggested Anti-EMD Antibody
Titration: 1.0 ug/ml
Positive Control: MCF7 Whole Cell
EMD is supported by BioGPS gene expression data to be expressed in MCF7