

Product datasheet for **TA358339**

RHD Rabbit Polyclonal Antibody

Product data:

Product Type:	Primary Antibodies
Applications:	WB
Reactivity:	Human
Host:	Rabbit
Clonality:	Polyclonal
Specificity:	Expected reactivity: Cow, Human Homology: Cow: 79%; Human: 100%
Formulation:	Liquid. Purified antibody supplied in 1x PBS buffer with 0.09% (w/v) sodium azide and 2% sucrose. <i>Note that this product is shipped as lyophilized powder to China customers.</i>
Concentration:	lot specific
Purification:	Affinity Purified
Conjugation:	Unconjugated
Storage:	For short term use, store at 2-8°C up to 1 week. For long term storage, store at -20°C in small aliquots to prevent freeze-thaw cycles.
Stability:	Shelf life: one year from despatch.
Predicted Protein Size:	31kDa
Gene Name:	Rh blood group D antigen
Database Link:	NP_001121163 Entrez Gene 6007 Human B2LR45



[View online »](#)

Background:

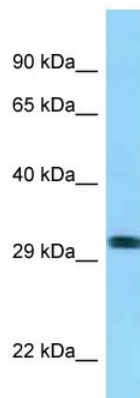
The Rh blood group system is the second most clinically significant of the blood groups, second only to ABO. It is also the most polymorphic of the blood groups, with variations due to deletions, gene conversions, and missense mutations. The Rh blood group includes this gene, which encodes the RhD protein, and a second gene that encodes both the RhC and RhE antigens on a single polypeptide. The two genes, and a third unrelated gene, are found in a cluster on chromosome 1. The classification of Rh-positive and Rh-negative individuals is determined by the presence or absence of the highly immunogenic RhD protein on the surface of erythrocytes. Multiple transcript variants encoding different isoforms have been found for this gene.

Synonyms:

CD240D; DIIIc; MGC165007; RH; Rh4; RH30; Rh30a; RHCED; RhDCw; RHDel; RHDVA(TT); RhII; RhK562-II; RhPI; RHPII; RHXIII

Protein Families:

Transmembrane

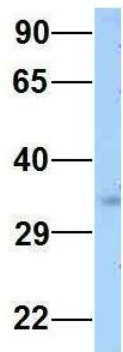
Product images:

WB Suggested Anti-RHD Antibody

Titration: 1.0 ug/ml

Positive Control: RPMI-8226 Whole Cell. RHD is strongly supported by BioGPS gene expression data to be expressed in RPMI 8226

RHD



Rabbit Anti-RHD
Sample Type: Human 293T
Antibody Concentration: 1ug/mL

Host: Rabbit
Target Name: RHD
Sample Type: 293T
Antibody Dilution: 1.0ug/ml
RHD is strongly supported by BioGPS gene expression data to be expressed in Human HEK293T cells

RHD



Rabbit Anti-RHD
Sample Type: Human Fetal Brain
Antibody Concentration: 1ug/mL

Host: Rabbit
Target Name: RHD
Sample Type: Human Fetal Brain
Antibody Dilution: 1.0ug/ml

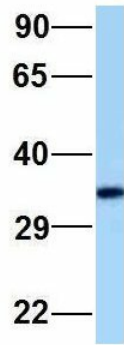
RHD



Rabbit Anti-RHD
Sample Type: Human Fetal Liver
Antibody Concentration: 1ug/mL

Host: Rabbit
Target Name: RHD
Sample Type: Human Fetal Liver
Antibody Dilution: 1.0ug/ml

RHD



Rabbit Anti-RHD
Sample Type: Human Adult Placenta
Antibody Concentration: 1ug/mL

Host: Rabbit
Target Name: RHD
Sample Type: Human Adult Placenta
Antibody Dilution: 1.0ug/ml