

Product datasheet for **TA358333**

Testin (TES) Rabbit Polyclonal Antibody

Product data:

Product Type:	Primary Antibodies
Applications:	IHC, WB
Reactivity:	Human
Host:	Rabbit
Clonality:	Polyclonal
Specificity:	Expected reactivity: Cow, Dog, Guinea Pig, Horse, Human, Pig, Sheep Homology: Cow: 100%; Dog: 100%; Guinea Pig: 91%; Horse: 79%; Human: 100%; Pig: 93%; Sheep: 100%
Formulation:	Liquid. Purified antibody supplied in 1x PBS buffer with 0.09% (w/v) sodium azide and 2% sucrose.
Concentration:	lot specific
Purification:	Affinity Purified
Conjugation:	Unconjugated
Storage:	For short term use, store at 2-8°C up to 1 week. For long term storage, store at -20°C in small aliquots to prevent freeze-thaw cycles.
Stability:	Shelf life: one year from despatch.
Predicted Protein Size:	47kDa
Gene Name:	testin LIM domain protein
Database Link:	NP_056456 Entrez Gene 26136 Human Q9UGI8



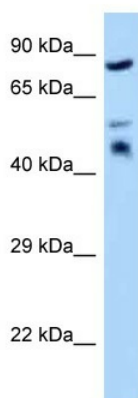
[View online »](#)

Background:

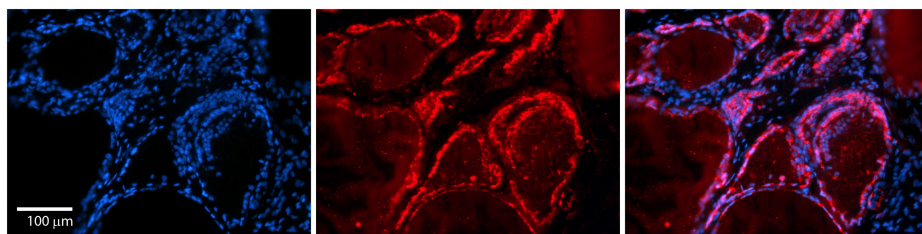
Cancer-associated chromosomal changes often involve regions containing fragile sites. This gene maps to a common fragile site on chromosome 7q31.2 designated FRA7G. This gene is similar to mouse Testin, a testosterone-responsive gene encoding a Sertoli cell secretory protein containing three LIM domains. LIM domains are double zinc-finger motifs that mediate protein-protein interactions between transcription factors, cytoskeletal proteins and signaling proteins. This protein is a negative regulator of cell growth and may act as a tumor suppressor. This scaffold protein may also play a role in cell adhesion, cell spreading and in the reorganization of the actin cytoskeleton. Multiple protein isoforms are encoded by transcript variants of this gene.

Synonyms:

TESS; TESS-2

Product images:


WB Suggested Anti-TES Antibody
Titration: 1.0 ug/ml
Positive Control: Hela Whole CellTES is strongly supported by BioGPS gene expression data to be expressed in Human HeLa cells



Rabbit Anti-TES Antibody
Catalog Number: TA358333
Formalin Fixed Paraffin Embedded Tissue:
Human Thyroid Tissue
Observed Staining: Cytoplasm in follicular cells
Primary Antibody Concentration: N/A
Other Working Concentrations: 1:600
Secondary Antibody: Donkey anti-Rabbit-Cy3
Secondary Antibody Concentration: 1:200
Magnification: 20X
Exposure Time: 0.5–2.0 sec